





ELKAY FOODSERVICE PRODUCTS

WHY ELKAY

ELKAY WAS FOUNDED IN 1920. THE LEADERSHIP AND VISION OF ELKAY'S FOUNDERS HAVE BEEN MAINTAINED BY PROVIDING HIGH-QUALITY, INNOVATIVE PRODUCTS AND PREMIER CUSTOMER CARE.

WE OFFER:

CUSTOM DESIGN -

WE CAN DESIGN AND ENGINEER UNIQUE SOLUTIONS AT COMPETITIVE PRICES WITHOUT COMPROMISING ON QUALITY.

SOLUTION-ORIENTED SERVICE -

OUR PROFESSIONAL CUSTOMER CARE TEAM, LOCATED IN THE U.S., IS MAKING THE CUSTOMER EXPERIENCE EXCEPTIONAL..

NATIONAL DISTRIBUTION NETWORK -

MULTIPLE LOCATIONS AND LARGE PRODUCT INVENTORY ALLOW FOR SHORT LEAD TIMES WITH HASSLE-FREE SERVICE AND DISTRIBUTION.

TRUSTED CERTIFICATION -

OUR PRODUCTS ARE THIRD-PARTY TESTED TO MEET NSF AND CUSTOM UL STANDARDS FOR PRODUCT SAFETY AND RELIABILITY.

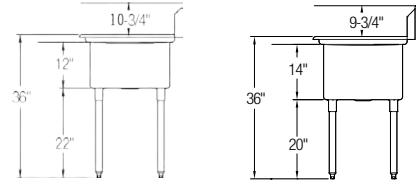
TABLE OF CONTENTS

SCULLERY SINKS	3-10
STANDARD SERIES	3-6
ECONOMY SERIES	7-10
CONVENIENCE STORE	11
BUDGET SINKS	12
HAND SINKS	13-14
DROP-IN SINKS	15
FLOOR TROUGHS	16
FAUCETS	17-19
DISH TABLES	20-21
WORK TABLES	22-32
ECONOMY SERIES	22-31
BUDGET SERIES	32
EQUIPMENT STANDS	33
MIXER STANDS	34
SHELVING & RACKS	35-38
PRE-CHILLERS	39
RETHEMALIZERS	40
PREMIUM WATER DISPENSERS	41
ACCESSORIES	42-43

SCULLERY SINKS | STANDARD SERIES

16 GAUGE 300 SERIES STAINLESS STEEL CONSTRUCTION

- Includes the Elkay difference.
- 12" or 14" deep bowls with 3/4" coved corners.
- Includes stainless steel legs and bullet feet.
- 8" on center faucet holes.
- 9" or 10" backsplash with tile ledge for easy installation.



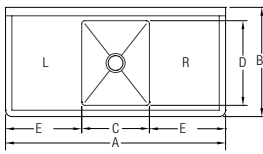
ADD-ON OPTIONS

CT-26	Breaker holes (set of 2)	\$40.00	CT-201	H-frame double leg, 1 5/8", 16 ga. 304 S/S, with adj. S/S foot	\$254.00
CT-118	Disposer ring weld	\$325.00	72320013	Flanged foot, adj., S/S (ea)	\$40.00
CT-23	Disposer control bracket, 5" x 7"	\$152.00	CT-60	Punch for splash mount faucet (set)	\$40.00
CT-24	Disposer control bracket, 11" x 17"	\$234.00	CT-59	Faucet hole modification (fill holes, polish & punch new holes)	\$387.00
74160106	Replacement basket strainer, 3 1/2"	\$30.00			

1 COMPARTMENT - 12" DEEP BOWLS



1C18X24-2-18X



MODEL	LIST PRICE	OVERALL SIZE		BOWL SIZE		DRAINBOARD	
		A	B	C	D	E	SIDE
1C18X18-0X	\$921	23	23.75	18	18	-	-
1C18X24-0X	\$1,025	23	29.75	18	24	-	-
1C24X24-0X	\$1,229	29	29.75	24	24	-	-
1C18X18-L-18X	\$1,127	38.5	23.75	18	18	18	L
1C18X24-L-18X	\$1,229	38.5	29.75	18	24	18	L
1C18X24-L-24X	\$1,331	44.5	29.75	18	24	24	L
1C24X24-L-24X	\$1,538	50.5	29.75	24	24	24	L
1C18X18-R-18X	\$1,127	38.5	23.75	18	18	18	R
1C18X24-R-18X	\$1,229	38.5	29.75	18	24	18	R
1C18X24-R-24X	\$1,331	44.5	29.75	18	24	24	R
1C24X24-R-24X	\$1,538	50.5	29.75	24	24	24	R
1C18X18-2-18X	\$1,331	54	23.75	18	18	18	L & R
1C18X24-2-18X	\$1,433	54	29.75	18	24	18	L & R
1C18X24-2-24X	\$1,538	66	29.75	18	24	24	L & R
1C24X24-2-24X	\$1,692	72	29.75	24	24	24	L & R

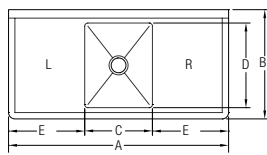
SCULLERY SINKS | STANDARD SERIES

16 GAUGE 300 SERIES STAINLESS STEEL CONSTRUCTION

1 COMPARTMENT - 14" DEEP BOWLS



14-1C16X20-2-18X

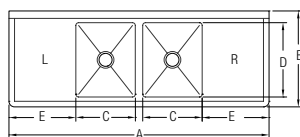


MODEL	LIST PRICE	OVERALL SIZE		BOWL SIZE		DRAINBOARD	
		A	B	C	D	E	SIDE
14-1C16X20-0X	\$955	21	25.75	16	20	-	-
14-1C18X24-0X	\$1,099	23	29.75	18	24	-	-
14-1C22X22-0X	\$1,099	27	27.75	22	22	-	-
14-1C24X24-0X	\$1,203	29	29.75	24	24	-	-
14-1C16X20-L-18X	\$1,255	36.5	25.75	16	20	18	L
14-1C18X24-L-18X	\$1,334	38.5	29.75	18	24	18	L
14-1C16X20-R-18X	\$1,255	36.5	25.75	16	20	18	R
14-1C18X24-R-18X	\$1,334	38.5	29.75	18	24	18	R
14-1C16X20-2-18X	\$1,386	52	25.75	16	20	18	L & R

2 COMPARTMENTS - 12" DEEP BOWLS



2C18X24-2-18X



MODEL	LIST PRICE	OVERALL SIZE		BOWL SIZE		DRAINBOARD	
		A	B	C	D	E	SIDE
2C18X18-0X	\$1,433	43	23.75	18	18	-	-
2C18X24-0X	\$1,538	43	29.75	18	24	-	-
2C24X24-0X	\$1,692	55	29.75	24	24	-	-
2C18X18-L-18X	\$1,640	58.5	23.75	18	18	18	L
2C18X24-L-18X	\$1,742	58.5	29.75	18	24	18	L
2C18X18-L-24X	\$1,742	64.5	23.75	18	18	24	L
2C18X24-L-24X	\$1,844	64.5	29.75	18	24	24	L
2C24X24-L-24X	\$1,998	76.5	29.75	24	24	24	L
2C18X18-R-18X	\$1,640	58.5	23.75	18	18	18	R
2C18X24-R-18X	\$1,742	58.5	29.75	18	24	18	R
2C18X18-R-24X	\$1,742	64.5	23.75	18	18	24	R
2C18X24-R-24X	\$1,844	64.5	29.75	18	24	24	R
2C24X24-R-24X	\$1,998	76.5	29.75	24	24	24	R
2C18X18-2-18X	\$1,844	74	23.75	18	18	18	L & R
2C18X24-2-18X	\$1,948	74	29.75	18	24	18	L & R
2C18X18-2-24X	\$1,948	86	23.75	18	18	24	L & R
2C18X24-2-24X	\$2,050	86	29.75	18	24	24	L & R
2C24X24-2-24X	\$2,152	98	29.75	24	24	24	L & R

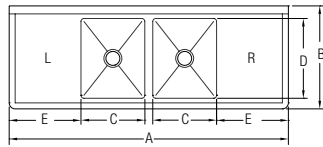
SCULLERY SINKS | STANDARD SERIES

16 GAUGE 300 SERIES STAINLESS STEEL CONSTRUCTION

2 COMPARTMENTS - 14" DEEP BOWLS



14-2C18X24-2-18X

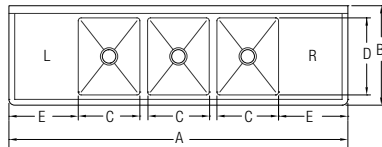


MODEL	LIST PRICE	OVERALL SIZE		BOWL SIZE		DRAINBOARD	
		A	B	C	D	E	SIDE
14-2C16X20-0X	\$1,530	39	25.75	16	20	-	-
14-2C18X24-0X	\$1,634	43	29.75	18	24	-	-
14-2C24X24-0X	\$2,155	55	29.75	24	24	-	-
14-2C16X20-L-18X	\$1,844	54.5	25.75	16	20	18	L
14-2C18X24-L-18X	\$1,935	58.5	29.75	18	24	18	L
14-2C24X24-L-24X	\$2,131	76.5	29.75	24	24	24	L
14-2C16X20-R-18X	\$1,844	54.5	25.75	16	20	18	R
14-2C18X24-R-18X	\$1,935	58.5	29.75	18	24	18	R
14-2C24X24-R-24X	\$2,131	76.5	29.75	24	24	24	R
14-2C16X20-2-18X	\$1,987	70	25.75	16	20	18	L & R
14-2C18X24-2-18X	\$2,066	74	29.75	18	24	18	L & R
14-2C24X24-2-24X	\$2,288	98	29.75	24	24	24	L & R

3 COMPARTMENTS - 12" DEEP BOWLS



3C18X24-2-18X



MODEL	LIST PRICE	OVERALL SIZE		BOWL SIZE		DRAINBOARD	
		A	B	C	D	E	SIDE
3C18X18-0X	\$1,948	63	23.75	18	18	-	-
3C18X24-0X	\$2,050	63	29.75	18	24	-	-
3C24X24-0X*	\$2,254	81	29.75	24	24	-	-
3C18X18-L-18X	\$2,152	78.5	23.75	18	18	18	L
3C18X24-L-18X	\$2,254	78.5	29.75	18	24	18	L
3C18X24-L-24X	\$2,356	84.5	29.75	18	24	24	L
3C24X24-L-24X*	\$2,767	102.5	29.75	24	24	24	L
3C18X18-R-18X	\$2,152	78.5	23.75	18	18	18	R
3C18X24-R-18X	\$2,254	78.5	29.75	18	24	18	R
3C18X24-R-24X	\$2,356	84.5	29.75	18	24	24	R
3C24X24-R-24X*	\$2,767	102.5	29.75	24	24	24	R
3C18X18-2-18X	\$2,356	94	23.75	18	18	18	L & R
3C16X20-2-18X	\$1,742	88	25.75	16	20	18	L & R
3C18X24-2-18X	\$2,461	94	29.75	18	24	18	L & R
3C20X28-2-20X	\$3,075	104	33.75	20	28	20	L & R
3C18X18-2-24X	\$2,461	106	23.75	18	18	24	L & R
3C18X24-2-24X	\$2,563	106	29.75	18	24	24	L & R
3C24X24-2-24X*	\$2,973	124	29.75	24	24	24	L & R
3C20X28-2-24X	\$3,177	112	33.75	20	28	24	L & R

*Has two sets of faucet holes — requires two faucets.

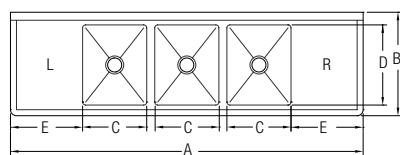
SCULLERY SINKS | STANDARD SERIES

16 GAUGE 300 SERIES STAINLESS STEEL CONSTRUCTION

3 COMPARTMENTS - 14" DEEP BOWLS



14-3C18X24-2-18X

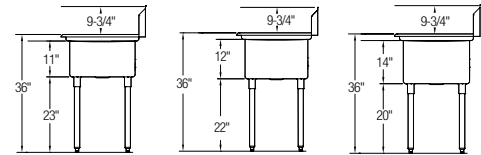


MODEL	LIST PRICE	OVERALL SIZE		BOWL SIZE		DRAINBOARD	
		A	B	C	D	E	SIDE
14-3C16X20-0X	\$2,027	57	25.75	16	20	-	-
14-3C18X24-0X	\$2,066	63	29.75	18	24	-	-
14-3C24X24-0X	\$2,380	81	29.75	24	24	-	-
14-3C16X20-L-18X	\$2,301	72.5	25.75	16	20	18	L
14-3C18X24-L-18X	\$2,419	78.5	29.75	18	24	18	L
14-3C18X24-L-24X	\$2,550	84.5	29.75	18	24	24	L
14-3C24X24-L-24X*	\$2,876	76.5	29.75	24	24	24	L
14-3C16X20-R-18X	\$2,301	72.5	25.75	16	20	18	R
14-3C18X24-R-18X	\$2,419	78.5	29.75	18	24	18	R
14-3C18X24-R-24X	\$2,550	84.5	29.75	18	24	24	R
14-3C24X24-R-24X*	\$2,876	76.5	29.75	24	24	24	R
14-3C16X20-2-18X	\$2,393	88	25.75	16	20	18	L & R
14-3C18X24-2-18X	\$2,615	94	29.75	18	24	18	L & R
14-3C20X20-2-20X	\$2,550	106	25.75	20	20	20	L & R
14-3C18X24-2-24X	\$2,811	106	29.75	18	24	24	L & R
14-3C16X20-2-24X	\$2,536	100	25.75	16	20	24	L & R
14-3C24X24-2-24X*	\$3,072	124	29.75	24	24	24	L & R

SCULLERY SINKS | ECONOMY SERIES

18 GAUGE 300 SERIES STAINLESS STEEL CONSTRUCTION

- Includes the Elkay difference.
- 11", 12" or 14" deep bowls with ¾" covered corners.
- Includes stainless steel legs and bullet feet.
- 8" on center faucet holes.
- 9" backsplash with tile ledge for easy installation.

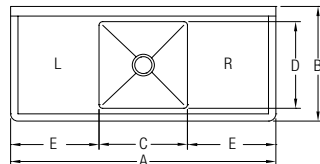


ADD-ON OPTIONS			
CT-26	Breaker holes (set of 2)	\$40.00	CT-201 H-frame double leg, 1½", 16 ga. 304 S/S, with adj. S/S foot \$254.00
CT-118	Disposer ring weld	\$325.00	72320013 Flanged foot, adj., S/S (ea) \$40.00
CT-23	Disposer control bracket, 5" x 7"	\$152.00	CT-60 Punch for splash mount faucet (set) \$40.00
CT-24	Disposer control bracket, 11" x 17"	\$234.00	CT-59 Faucet hole modification (fill holes, polish & punch new holes) \$387.00
74160106	Replacement basket strainer, 3½"	\$30.00	

1 COMPARTMENT - 11" DEEP BOWLS



SE1C18X18-2-18



MODEL	LIST PRICE	OVERALL SIZE		BOWL SIZE		DRAINBOARD	
		A	B	C	D	E	SIDE
SE1C18X18-0X	\$586	23	23.75	18	18	-	-
SE1C24X24-0X	\$1,059	29	29.75	24	24	-	-
SE1C18X18-L-18X	\$706	38.5	23.75	18	18	18	L
SE1C18X18-R-18X	\$706	38.5	23.75	18	18	18	R
SE1C18X18-2-18X	\$848	54	23.75	18	18	18	L & R

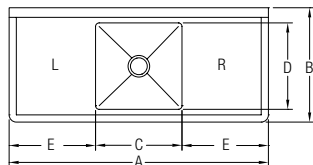
SCULLERY SINKS | ECONOMY SERIES

18 GAUGE 300 SERIES STAINLESS STEEL CONSTRUCTION

1 COMPARTMENT - 12" DEEP BOWLS



E1C20X20-2-20X

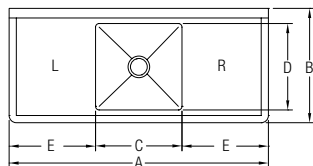


MODEL	LIST PRICE	OVERALL SIZE		BOWL SIZE		DRAINBOARD	
		A	B	C	D	E	SIDE
E1C16X20-0X	\$508	21	25.75	16	20	-	-
E1C20X20-0X	\$719	25	25.75	20	20	-	-
E1C24X24-0X	\$916	29	29.75	24	24	-	-
E1C16X20-L-18X	\$651	36.5	25.75	16	20	18	L
E1C20X20-L-20X	\$916	42.5	25.75	20	20	20	L
E1C24X24-L-24X	\$1,125	50.5	29.75	24	24	24	L
E1C16X20-R-18X	\$651	36.5	25.75	16	20	18	R
E1C20X20-R-20X	\$916	42.5	25.75	20	20	20	R
E1C24X24-R-24X	\$1,125	50.5	29.75	24	24	24	R
E1C16X20-2-18X	\$900	52	25.75	16	20	18	L & R
E1C20X20-2-20X	\$1,072	60	25.75	20	20	20	L & R
E1C24X24-2-24X	\$1,268	72	29.75	24	24	24	L & R

1 COMPARTMENT - 14" DEEP BOWLS



S1C18X18-2-18X

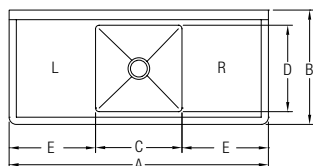


MODEL	LIST PRICE	OVERALL SIZE		BOWL SIZE		DRAINBOARD	
		A	B	C	D	E	SIDE
S1C18X18-0X	\$665	23	23.75	18	18	-	-
S1C24X24-0X	\$811	29	29.75	24	24	-	-
S1C18X18-L-18X	\$871	38.5	23.75	18	18	18	L
S1C18X18-R-18X	\$871	38.5	23.75	18	18	18	R
S1C18X18-2-18X	\$1,025	54	23.75	18	18	18	L & R

2 COMPARTMENTS - 11" DEEP BOWLS



SE2C18X18-2-18X



MODEL	LIST PRICE	OVERALL SIZE		BOWL SIZE		DRAINBOARD	
		A	B	C	D	E	SIDE
SE2C18X18-L-18X	\$1,070	56.5	23.75	18	18	18	L
SE2C18X18-R-18X	\$1,070	56.5	23.75	18	18	18	R
SE2C18X18-2-18X	\$1,224	72	23.75	18	18	18	L & R

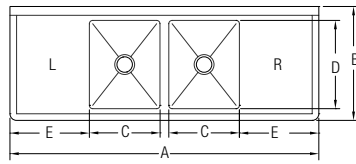
SCULLERY SINKS | ECONOMY SERIES

18 GAUGE 300 SERIES STAINLESS STEEL CONSTRUCTION

2 COMPARTMENTS - 12" DEEP BOWLS



E2C16X20-2-18X

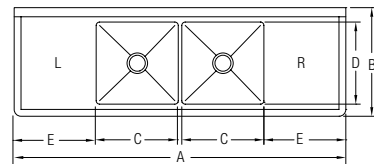


MODEL	LIST PRICE	OVERALL SIZE		BOWL SIZE		DRAINBOARD	
		A	B	C	D	E	SIDE
E2C16X20-0X	\$942	39	25.75	16	20	-	-
E2C20X20-0X	\$1,072	47	25.75	20	20	-	-
E2C24X24-0X	\$1,282	55	29.75	24	24	-	-
E2C16X20-L-18X	\$1,151	54.5	25.75	16	20	18	L
E2C20X20-L-20X	\$1,282	64.5	25.75	20	20	20	L
E2C24X24-L-24X	\$1,491	76.5	29.75	24	24	24	L
E2C16X20-R-18X	\$1,151	54.5	25.75	16	20	18	R
E2C20X20-R-20X	\$1,282	64.5	25.75	20	20	20	R
E2C24X24-R-24X	\$1,491	76.5	29.75	24	24	24	R
E2C16X20-2-18X	\$1,229	70	25.75	16	20	18	L & R
E2C20X20-2-20X	\$1,412	82	25.75	20	20	20	L & R
E2C24X24-2-24X	\$1,608	98	29.75	24	24	24	L & R

2 COMPARTMENTS - 14" DEEP BOWLS



S2C18X18-2-18X



MODEL	LIST PRICE	OVERALL SIZE		BOWL SIZE		DRAINBOARD	
		A	B	C	D	E	SIDE
S2C18X18-L-18X	\$1,229	56.5	23.75	18	18	18	L
S2C18X18-R-18X	\$1,229	56.5	23.75	18	18	18	R
S2C18X18-2-18X	\$1,384	72	23.75	18	18	18	L & R

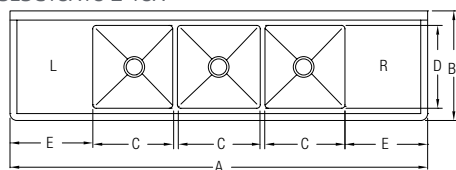
SCULLERY SINKS | ECONOMY SERIES

18 GAUGE 300 SERIES STAINLESS STEEL CONSTRUCTION

3 COMPARTMENTS - 11" DEEP BOWLS



SE3C18X18-2-18X

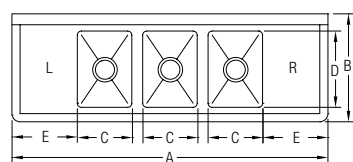


MODEL	LIST PRICE	OVERALL SIZE		BOWL SIZE		DRAINBOARD	
		A	B	C	D	E	SIDE
SE3C18X18-L-18X	\$1,404	74.5	23.75	18	18	18	L
SE3C18X18-R-18X	\$1,404	74.5	23.75	18	18	18	R
SE3C18X18-2-18X	\$1,556	90	23.75	18	18	18	L & R
SE3C24X24-2-24X*	\$2,121	120	29.75	24	24	24	L & R

3 COMPARTMENTS - 12" DEEP BOWLS



E3C16X20-2-18X

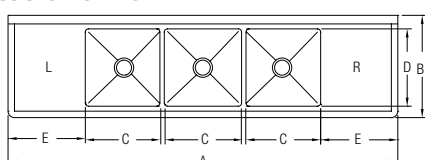


MODEL	LIST PRICE	OVERALL SIZE		BOWL SIZE		DRAINBOARD	
		A	B	C	D	E	SIDE
E3C16X20-0X	\$1,255	57	25.75	16	20	-	-
E3C24X24-0X*	\$1,634	81	29.75	24	24	-	-
E3C16X20-L-18X	\$1,334	72.5	25.75	16	20	18	L
E3C20X20-L-20X	\$1,634	86.5	25.75	20	20	20	L
E3C24X24-L-24X*	\$1,831	102.5	29.75	24	24	24	L
E3C16X20-R-18X	\$1,334	72.5	25.75	16	20	18	R
E3C20X20-R-20X	\$1,634	86.5	25.75	20	20	20	R
E3C24X24-R-24X*	\$1,831	102.5	29.75	24	24	24	R
E3C16X20-2-18X	\$1,410	88	25.75	16	20	18	L & R
E3C20X20-2-20X	\$1,778	104	25.75	20	20	20	L & R
E3C24X24-2-24X*	\$1,961	124	29.75	24	24	24	L & R

3 COMPARTMENTS - 14" DEEP BOWLS



S3C18X18-2-18X

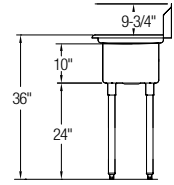


MODEL	LIST PRICE	OVERALL SIZE		BOWL SIZE		DRAINBOARD	
		A	B	C	D	E	SIDE
S3C18X18-L-18X	\$1,587	74.5	23.75	18	18	18	L
S3C18X18-R-18X	\$1,587	74.5	23.75	18	18	18	R
S3C18X18-2-18X	\$1,742	90	23.75	18	18	18	L & R
S3C24X24-2-24X*	\$2,118	120	29.75	24	24	24	L & R

CONVENIENCE STORE SINKS

16 GAUGE 300 SERIES STAINLESS STEEL CONSTRUCTION

- Includes the Elkay difference.
- 10" deep bowls with 3/4" covered corners.
- Includes stainless steel legs and bullet feet.
- 8" on center faucet holes.
- 9" backsplash with tile ledge for easy installation.

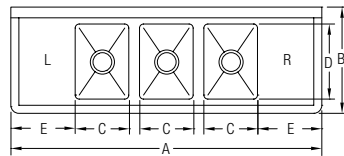


ADD-ON OPTIONS			
CT-26	Breaker holes (set of 2)	\$40.00	CT-201 H-frame double leg, 1 1/2", 16 ga. 304 S/S, with adj. S/S foot \$254.00
CT-118	Disposer ring weld	\$325.00	72320013 Flanged foot, adj., S/S (ea) \$40.00
CT-23	Disposer control bracket, 5" x 7"	\$152.00	CT-60 Punch for splash mount faucet (set) \$40.00
CT-24	Disposer control bracket, 11" x 17"	\$234.00	CT-59 Faucet hole modification (fill holes, polish & punch new holes) \$387.00
74160106	Replacement basket strainer, 3 1/2"	\$30.00	

3 COMPARTMENTS - 10" DEEP BOWLS



3C10X14-2-12X

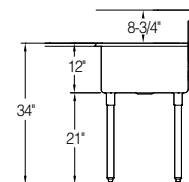


MODEL	LIST PRICE	OVERALL SIZE		BOWL SIZE		DRAINBOARD	
		A	B	C	D	E	SIDE
3C10X14-0X	\$1,025	39	19.75	10	14	-	-
3C12X16-0X	\$1,331	45	21.75	12	16	-	-
3C10X14-L-12X	\$1,127	48.5	19.75	10	14	12	L
3C10X14-R-12X	\$1,127	48.5	19.75	10	14	12	R
3C10X14-2-12X	\$1,229	58	19.75	10	14	12	L & R
3C12X16-2-12X	\$1,538	64	21.75	12	16	12	L & R
3C10X14-2-16X	\$1,331	66	19.75	10	14	16	L & R
3C12X16-2-16X	\$1,640	72	21.75	12	16	16	L & R

BUDGET SINKS

18 GAUGE 300 SERIES STAINLESS STEEL CONSTRUCTION

- 12" deep bowls with ¾" covered corners.
- 8" on center faucet holes.
- Includes stainless steel legs and bullet feet.
- 8" backsplash with tile ledge for easy installation.

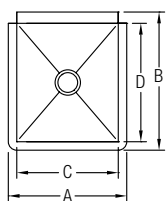


ADD-ON OPTIONS					
CT-26	Breaker holes (set of 2)	\$40.00	CT-201	H-frame double leg, 1½", 16 ga. 304 S/S, with adj. S/S foot	\$254.00
CT-118	Disposer ring weld	\$325.00	72320013	Flanged foot, adj., S/S (ea)	\$40.00
CT-23	Disposer control bracket, 5" x 7"	\$152.00	CT-60	Punch for splash mount faucet (set)	\$40.00
CT-24	Disposer control bracket, 11" x 17"	\$234.00	CT-59	Faucet hole modification (fill holes, polish & punch new holes)	\$387.00
74160106	Replacement basket strainer, 3½"	\$30.00			

1 COMPARTMENT - 12" DEEP BOWLS



B1C24X24X

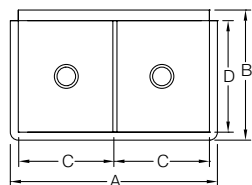


MODEL	LIST PRICE	OVERALL SIZE		BOWL SIZE	
		A	B	C	D
B1C18X18X	\$602	21	21.5	18	18
B1C18X21X	\$706	21	24.5	18	21
B1C24X24X	\$889	27	27.5	24	24

2 COMPARTMENTS - 12" DEEP BOWLS



B2C24X24X

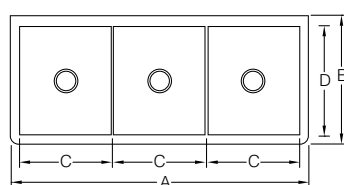


MODEL	LIST PRICE	OVERALL SIZE		BOWL SIZE	
		A	B	C	D
B2C18X21X	\$1,059	39	24.5	18	21
B2C24X24X	\$1,242	51	27.5	24	24

3 COMPARTMENTS - 12" DEEP BOWLS



B3C18X21X



MODEL	LIST PRICE	OVERALL SIZE		BOWL SIZE	
		A	B	C	D
B3C12X21X	\$1,242	39	24.5	12	21
B3C18X21X	\$1,412	57	24.5	18	21
B3C24X24X	\$1,608	75	27.5	24	24

HAND SINKS

18 GAUGE 300 SERIES STAINLESS STEEL CONSTRUCTION

- Includes the Elkay difference.
- Easy to clean and sanitize.
- 1½" drain opening.
- Strainer and faucet included.
- NSF certified.
- Faucet included.

SPLASH MOUNTED



EHS-14-PEDX



SEHS-17X



EHS-18-SDX



EHS-14X



EHS-18X



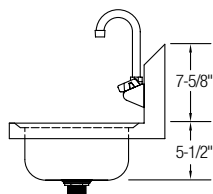
EHS-18-STDY

MODEL	LIST PRICE	OVERALL SIZE		BOWL SIZE	
		A	B	C	D
BASIC					
EHS-14X	\$244	14	16.5	10	12
EHS-18X	\$262	18	14.5	14	10
SEHS-17X	\$367	17	15	14	10
EHS-14-WBX	\$306	14	16.5	10	12
WITH SIDE SPLASH(ES)					
EHS-18-S-LX	\$359	18	14.5	14	10
EHS-18-S-RX	\$359	18	14.5	14	10
EHS-18-SSX	\$419	18	14.5	14	10
WITH KNEE VALVE					
EHS-18-KVX	\$1,020	18	14.5	14	10
WITH PEDESTAL BASE AND FOOT VALVE					
EHS-14-PEDX	\$1,229	14	16.5	10	12
EHS-18-PEDX	\$1,321	18	14.5	14	10
WITH SOAP AND TOWEL DISPENSER					
EHS-18-STDX	\$824	18	14.5	14	10
WITH SIDE SPLASHES, LEVER WASTE, OVERFLOW AND P-TRAP					
EHS-18-SDX	\$916	18	14.5	14	10
WITH SOAP AND TOWEL DISPENSER, SKIRT AND P-TRAP					
EHS-18-TSX	\$1,229	18	14.5	14	10

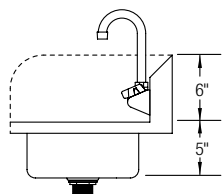
HAND SINKS

18 GAUGE 300 SERIES STAINLESS STEEL CONSTRUCTION

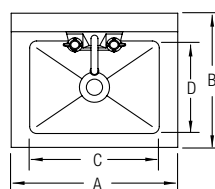
SPLASH MOUNTED



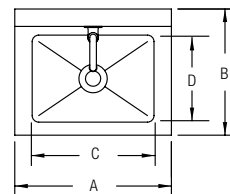
SEHS-17X



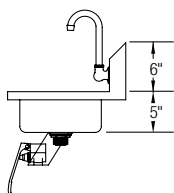
EHS-14X, EHS-18X, EHS-18-S-LX, EHS-18-S-RX, EHS-18-SSX



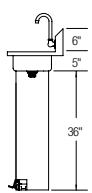
EHS-14X, EHS-18X, EHS-18-S-LX, EHS-18-S-RX, EHS-18-SDX, EHS-18-SSX, SEHS-17X, EHS-18-STDX, EHS-18-TDX, EHS-18-TSX



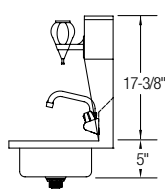
EHS-18-KVX, EHS-14-PEDX, EHS-18-PEDX



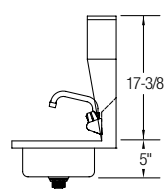
EHS-18-KVX



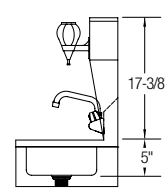
EHS-14-PEDX, EHS-18-PEDX



EHS-18-STDX

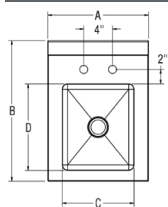


EHS-18-TDX

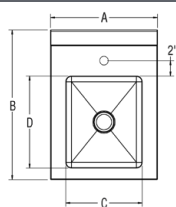


EHS-18-TSX

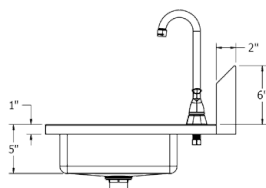
DECK MOUNTED



EHS-14-DHDX
EHS-18-DHDX



EHS-14-SHDX
EHS-18-SHDX



EHS-14-DHDX
EHS-18-DHDX

MODEL	LIST PRICE	OVERALL SIZE		BOWL SIZE	
		A	B	C	D
EHS-14-DHDX	\$244	14	20	10	12
EHS-14-SHDX	\$244	14	20	10	12
EHS-18-DHDX	\$254	18	18	14	10
EHS-18-SHDX	\$254	18	18	14	10

DROP IN SINKS

18 GAUGE 300 SERIES STAINLESS STEEL CONSTRUCTION

- 3½" drain opening.
- NSF certified.
- Strainer and faucet included.

DI10126X

DI-1C-101410X


DI-3C10410X

MODEL	LIST PRICE	OVERALL SIZE		BOWL SIZE		BOWL DEPTH
		A	B	C	D	E
1 COMPARTMENT						
DI10126X	\$262	12	16.75	10	11	6
DI-1C-101410X	\$393	13.5	19.5	10	14	10
1 COMPARTMENTS						
DI-3C-101410X	\$746	37	19.5	10	14	10

MOP SINKS

16 GAUGE 300 SERIES STAINLESS STEEL CONSTRUCTION

- 18 gauge stainless steel skirt.
- 2" No-Caulk Drain Included
- NSF certified.

	MODEL	LIST PRICE	OVERALL SIZE		BOWL SIZE		BOWL DEPTH	
			A	B	C	D	E	F
	FLR-1X	\$850	24	20	10	20	16	6
	FLR-2X	\$1,177	32	24	10	28	20	6
	FLR-3X	\$1,112	24	20	16	20	16	12
	FLR-4X	\$1,438	32	24	16	28	20	12

FLOOR TROUGHS

14 GAUGE 300 SERIES STAINLESS STEEL CONSTRUCTION

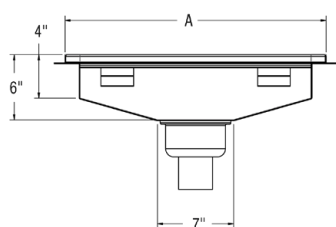
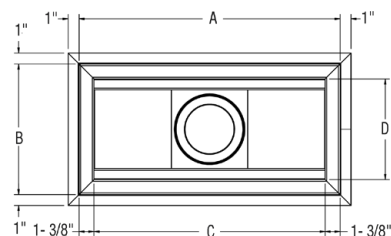
- Available with stainless steel (SSG) or fiberglass (FG) grate.
- 3-1/8" Removable Basket Strainer with 3" L Tail Piece Included



FD12X36-SSG-X



FD12X36-FG-X



MODEL	LIST PRICE	OVERALL SIZE	TROUGH SIZE	DEPTH
		A/B	B/C	
WITH STAINLESS STEEL GRATE				
FD12X24-SSG-X	\$2,319	24/12	22.6/10.6	6
FD12X36-SSG-X	\$2,502	36/12	34.6/10.6	6
FD12X48-SSG-X	\$2,895	48/12	46.6/10.6	6
FD12X60-SSG-X	\$3,208	60/12	58.6/10.6	6
FD18X24-SSG-X	\$2,685	24/18	22.6/10.6	6
WITH FIBERGLASS GRATE				
FD12X24-FG-X	\$2,215	24/12	22.6/10.6	6
FD12X36-FG-X	\$2,372	36/12	34.6/10.6	6
FD12X48-FG-X	\$2,764	48/12	46.6/10.6	6
FD12X60-FG-X	\$3,083	60/12	58.6/10.6	6
FD18X24-FG-X	\$2,581	24/18	22.6/10.6	6

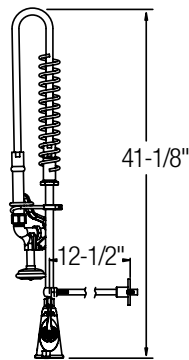
COMMERCIAL FAUCETS | PRE-RINSE

- 2" lever handles.
- Self closing valve.
- Quarter turn ceramic disc cartridge.
- Solid brass construction.
- 3.2 GPM spray head; 1.2 GPM spray head on low flow models.
- 44" flexible stainless steel hose; 60" hose on LK960 models.
- Insulated handle.
- Chrome finish.
- Spouts come with 2.2 GPM vandal-resistant aerator standard with 1.5 and .5 GPM insert included.

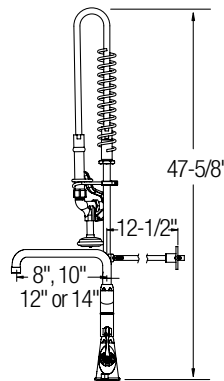
SINGLE HOLE, CONCEALED DECK



LK543C



LK543C



LK543AF08C
LK543AF10C

MODEL	LIST PRICE	SPOUT REACH
LK543C	\$558	-
LK543AF08C	\$676	8
LK543AF10C	\$698	10
LK543AF12C	\$721	12
LK543AF14C	\$744	14

LOW FLOW MODELS (1.2 GPM)

LK543LC	\$558	-
LK543AF08LC	\$656	8
LK543AF10LC	\$698	10
LK543AF12LC	\$721	12
LK543AF14LC	\$744	14

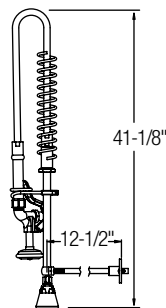
8" CENTERSET, DECK MOUNT



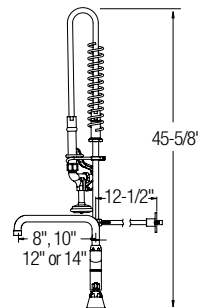
LK843C



LK843AF10C



LK843C



LK843AF08C
LK843AF10C

MODEL	LIST PRICE	SPOUT REACH
LK843C	\$629	-
LK843AF08C	\$746	8
LK843AF10C	\$767	10
LK843AF12C	\$790	12
LK843AF14C	\$813	14

LOW FLOW MODELS (1.2 GPM)

LK843LC	\$610	-
LK843AF08LC	\$724	8
LK843AF10LC	\$745	10
LK843AF12LC	\$790	12
LK843AF14LC	\$813	14

COMMERCIAL FAUCETS | PRE-RINSE

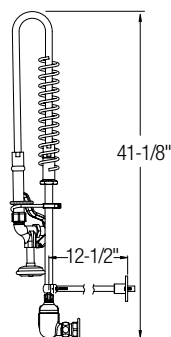
8" CENTERSET, SPLASH MOUNT



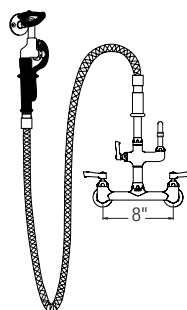
LK943C



LK943AF08C



LK943C



LK960AF08C


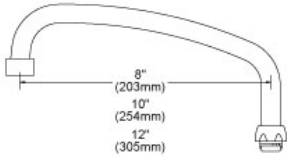

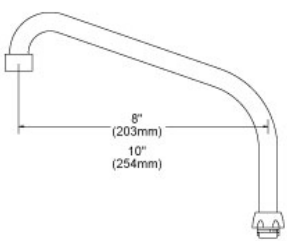

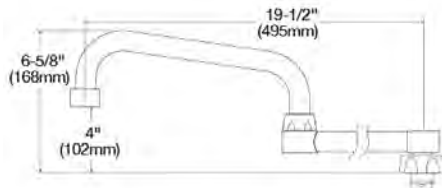

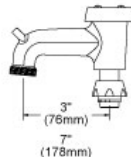
MODEL	LIST PRICE	SPOUT REACH
LK943C	\$632	-
LK943AF08C	\$798	8
LK943AF10C	\$821	10
LK943AF12C	\$807	12
LK943AF14C	\$830	14
LK960AF08C	\$862	8
LK960AF10C	\$883	10
LK960AF12C	\$906	12
LK960AF14C	\$929	14

LOW FLOW MODELS (1.2 GPM)

LK943LC	\$632	-
LK943AF08LC	\$798	8
LK943AF10LC	\$821	10
LK943AF12LC	\$807	12
LK943AF14LC	\$830	14
LK960AF08LC	\$862	8
LK960AF10LC	\$883	10
LK960AF12LC	\$906	12
LK960AF14LC	\$929	14

COMMERCIAL FAUCET SPOUTS

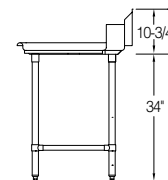
Variety of spouts interchangeable with any commercial faucet.

	MODEL	LIST PRICE	SPOUT REACH
 	ARC TUBE SPOUT		
	A55393	\$27	8
	A55395	\$32	10
	A55399	\$52	12
 	HIGH ARC SPOUT		
	A55446	\$45	8
	A55445	\$44	10
 	DOUBLE SWING SPOUT		
	A55411	\$90	20
 	BUCKET HOOK SPOUT		
	A55404	\$127	3
	A55405	\$124	3
	A55406	\$151	7
	A55407	\$133	7



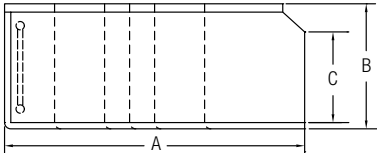
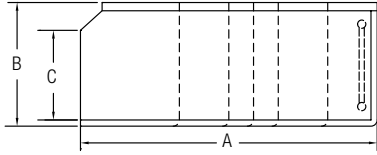
DISHTABLES

16 GAUGE 300 SERIES STAINLESS STEEL CONSTRUCTION

- Welded construction for consistent metal gauge thickness throughout the bowl.
- Sink bowls are 6" deep with ¾" coved corners (DDT & UDT).
- 10" backsplash (DDT & CDT) and 8" backsplash (UDT) with tile ledge for easy installation.
- 1½" rolled rim design, 2" tall
- Includes stainless steel legs and bullet feet.
- Carries NSF certification for foodservice application.
- Dish Tables sloped for positive drainage.



ADD-ON OPTIONS				
CT-26	Breaker holes (set of 2)	\$40.00	CT-201	H-frame double leg, 1½", 16 ga. 304 S/S, with adj. S/S foot
CT-118	Disposer ring weld	\$325.00		
CT-23	Disposer control bracket, 5" x 7"	\$152.00		
CT-24	Disposer control bracket, 11" x 17"	\$234.00		

CLEAN DISHTABLES					
	MODEL	LIST PRICE	OVERALL SIZE		
			A	B	C
 CDT-48-LX	CDT-24-LX	\$560	24	30	21.75
	CDT-36-LX	\$680	36	30	21.75
 CDT-48-RX	CDT-48-LX	\$785	48	30	21.75
	CDT-60-LX	\$942	60	30	21.75
 L MODEL	CDT-72-LX	\$1,112	72	30	21.75
	CDT-84-LX*	\$1,302	84	30	21.75
 R MODEL	CDT-96-LX*	\$1,357	96	30	21.75
	CDT-24-RX	\$560	24	30	21.75
	CDT-36-RX	\$680	36	30	21.75
	CDT-48-RX	\$785	48	30	21.75
	CDT-60-RX	\$942	60	30	21.75
	CDT-72-RX	\$1,112	72	30	21.75
	CDT-84-RX*	\$1,302	84	30	21.75
	CDT-96-RX*	\$1,357	96	30	21.75

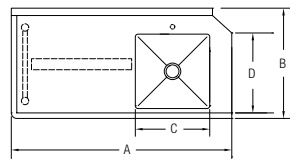
DISHTABLES

16 GAUGE 300 SERIES STAINLESS STEEL CONSTRUCTION

SOILED DISHTABLES



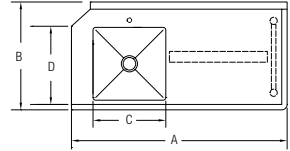
DDT-48-LX



L MODEL



DDT-48-RX



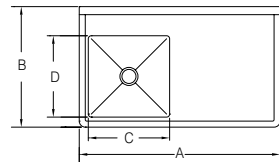
R MODEL

MODEL	LIST PRICE	OVERALL SIZE		BOWL SIZE		DEPTH
		A	B	C	D	
DDT-36-LX	\$1,268	36	30	20.25	20.25	6
DDT-48-LX	\$1,410	48	30	20.25	20.25	6
DDT-60-LX	\$1,501	60	30	20.25	20.25	6
DDT-72-LX	\$1,514	72	30	20.25	20.25	6
DDT-96-LX*	\$1,789	96	30	20.25	20.25	6
DDT-36-RX	\$1,268	36	30	20.25	20.25	6
DDT-48-RX	\$1,410	48	30	20.25	20.25	6
DDT-60-RX	\$1,501	60	30	20.25	20.25	6
DDT-72-RX	\$1,514	72	30	20.25	20.25	6
DDT-96-RX*	\$1,789	96	30	20.25	20.25	6

UNDER COUNTER DISHTABLES



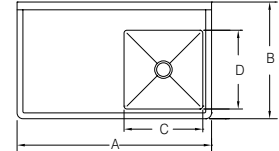
UDT-50-LX



L MODEL



UDT-50-RX



R MODEL

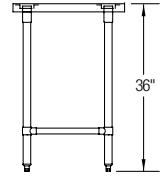
MODEL	LIST PRICE	OVERALL SIZE		BOWL SIZE		DEPTH
		A	B	C	D	
UDT-50-LX	\$1,334	50	30	20.25	20.25	6
UDT-60-LX	\$1,425	60	30	20.25	20.25	6
UDT-50-RX	\$1,334	50	30	20.25	20.25	6
UDT-60-RX	\$1,425	60	30	20.25	20.25	6

*Indicates a table with 3 sets of legs

WORK TABLES | STANDARD SERIES

16 GAUGE 304 SERIES STAINLESS STEEL CONSTRUCTION

- Two galvanized hat channels per table.
- 1½" heavy gauge tubing with fully adjustable 1" feet.
- Available with under shelf or cross bracing.
- Under shelf, cross bracing and legs available in stainless steel (STSX or BSX) or galvanized (STGX or BGX).
- Tables are shipped knocked down.
- Work tables larger than 72" have 6 legs.
- Backsplash models are 4" with 1" return.
- Carries NSF certification for foodservice application.



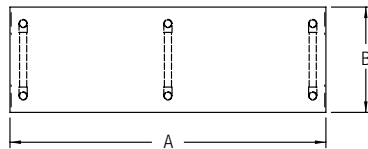
ADD-ON OPTIONS DRAWERS (DRAWERS INCLUDE HARDWARE FOR MOUNTING)

CT-11-1520E	Overall size: 15" x 20" x 5" Polyslide drawer with plastic liner	\$336.00	CT-19-4	Set of 4 casters, two locking, two non-locking	\$162.00
CT-11-1520P	Overall size: 15" x 20" x 5" Roller bearing drawer with plastic liner	\$387.00	CT-19-6	Set of 6 casters, two locking, four non-locking	\$254.00
CT-11-1520S	Overall size: 15" x 20" x 5" Roller bearing drawer with 18 gauge 300 series stainless steel liner	\$458.00	CT-74	Set of 4 casters, two locking, two non-locking	\$254.00
CT-11-2020P	Overall size: 20" x 20" x 5" Roller bearing drawer with plastic liner	\$519.00	CT-75	Set of 6 casters, two locking, four non-locking	\$295.00
CT-11-2020S	Overall size: 20" x 20" x 5" Roller bearing drawer with 18 gauge 300 series stainless steel liner	\$580.00			

FLAT TOP - CROSS BRACING



WT30X72-STSX



MODEL	LIST PRICE	OVERALL SIZE	
		A	B
WITH STAINLESS STEEL CROSS BRACE AND LEGS			
WT24X30-STSX	\$740	30	24
WT24X36-STSX	\$764	36	24
WT24X48-STSX	\$871	48	24
WT24X60-STSX	\$989	60	24
WT24X72-STSX	\$1,112	72	24
WT24X84-STSX*	\$1,292	84	24
WT24X96-STSX*	\$1,402	96	24
WT24X108-STSX*	\$1,436	108	24
WT24X120-STSX*	\$1,527	120	24
WT30X30-STSX	\$759	30	30
WT30X36-STSX	\$787	36	30
WT30X48-STSX	\$931	48	30
WT30X60-STSX	\$1,044	60	30
WT30X72-STSX	\$1,156	72	30
WT30X84-STSX*	\$1,357	84	30
WT30X96-STSX*	\$1,472	96	30
WT30X108-STSX*	\$1,561	108	30
WT30X120-STSX*	\$1,671	120	30

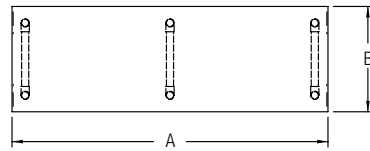
WORK TABLES | STANDARD SERIES

16 GAUGE 304 SERIES STAINLESS STEEL CONSTRUCTION

FLAT TOP - CROSS BRACING



WT30X72-STGX



MODEL	LIST PRICE	OVERALL SIZE	
		A	B
WITH GALVANIZED CROSS BRACE AND LEGS			
WT24X30-STGX	\$550	30	24
WT24X36-STGX	\$617	36	24
WT24X48-STGX	\$699	48	24
WT24X60-STGX	\$808	60	24
WT24X72-STGX	\$921	72	24
WT24X84-STGX*	\$1,033	84	24
WT24X96-STGX*	\$1,146	96	24
WT24X108-STGX*	\$1,258	108	24
WT24X120-STGX*	\$1,370	120	24
WT30X30-STGX	\$617	30	30
WT30X36-STGX	\$651	36	30
WT30X48-STGX	\$774	48	30
WT30X60-STGX	\$887	60	30
WT30X72-STGX	\$989	72	30
WT30X84-STGX*	\$1,133	84	30
WT30X96-STGX*	\$1,248	96	30
WT30X108-STGX*	\$1,336	108	30
WT30X120-STGX*	\$1,446	120	30

*Indicates a table with 3 sets of legs

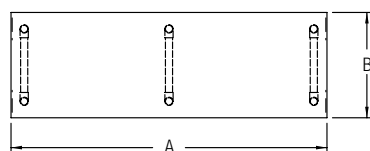
WORK TABLES | STANDARD SERIES

16 GAUGE 304 SERIES STAINLESS STEEL CONSTRUCTION

4" BACK SPLASH - CROSS BRACING



WT30X72-BSX



MODEL	LIST PRICE	OVERALL SIZE	
		A	B
WITH STAINLESS STEEL CROSS BRACE AND LEGS			
WT24X30-BSX	\$871	30	24
WT24X36-BSX	\$897	36	24
WT24X48-BSX	\$1,031	48	24
WT24X60-BSX	\$1,161	60	24
WT24X72-BSX	\$1,308	72	24
WT24X84-BSX*	\$1,519	84	24
WT24X96-BSX*	\$1,650	96	24
WT24X108-BSX*	\$1,689	108	24
WT24X120-BSX*	\$1,797	120	24
WT30X30-BSX	\$939	30	30
WT30X36-BSX	\$973	36	30
WT30X48-BSX	\$1,091	48	30
WT30X60-BSX	\$1,229	60	30
WT30X72-BSX	\$1,360	72	30
WT30X84-BSX*	\$1,598	84	30
WT30X96-BSX*	\$1,731	96	30
WT30X108-BSX*	\$1,836	108	30
WT30X120-BSX*	\$1,967	120	30

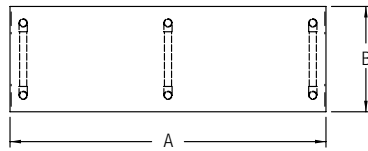
WORK TABLES | STANDARD SERIES

16 GAUGE 304 SERIES STAINLESS STEEL CONSTRUCTION

4" BACK SPLASH - CROSS BRACING



WT30X72-BGX



MODEL	LIST PRICE	OVERALL SIZE	
		A	B
WITH GALVANIZED CROSS BRACE AND LEGS			
WT24X30-BGX	\$646	30	24
WT24X36-BGX	\$727	36	24
WT24X48-BGX	\$819	48	24
WT24X60-BGX	\$952	60	24
WT24X72-BGX	\$1,083	72	24
WT24X84-BGX*	\$1,216	84	24
WT24X96-BGX*	\$1,347	96	24
WT24X108-BGX*	\$1,480	108	24
WT24X120-BGX*	\$1,611	120	24
WT30X30-BGX	\$727	30	30
WT30X36-BGX	\$767	36	30
WT30X48-BGX	\$910	48	30
WT30X60-BGX	\$1,044	60	30
WT30X72-BGX	\$1,161	72	30
WT30X84-BGX*	\$1,334	84	30
WT30X96-BGX*	\$1,467	96	30
WT30X108-BGX*	\$1,572	108	30
WT30X120-BGX*	\$1,702	120	30

*Indicates a table with 3 sets of legs

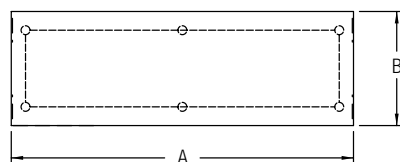
WORK TABLES | STANDARD SERIES

16 GAUGE 304 SERIES STAINLESS STEEL CONSTRUCTION

FLAT TOP - UNDER SHELF



WT30S72-STSX



MODEL	LIST PRICE	OVERALL SIZE	
		A	B
WITH STAINLESS STEEL UNDER SHELF AND LEGS			
WT24S24-STSX	\$719	24	24
WT24S30-STSX	\$733	30	24
WT24S36-STSX	\$759	36	24
WT24S48-STSX	\$863	48	24
WT24S60-STSX	\$1,023	60	24
WT24S72-STSX	\$1,156	72	24
WT24S84-STSX*	\$1,313	84	24
WT24S96-STSX*	\$1,436	96	24
WT24S108-STSX*	\$1,572	108	24
WT24S120-STSX*	\$1,684	120	24
WT30S30-STSX	\$759	30	30
WT30S36-STSX	\$787	36	30
WT30S48-STSX	\$931	48	30
WT30S60-STSX	\$1,044	60	30
WT30S72-STSX	\$1,266	72	30
WT30S84-STSX*	\$1,493	84	30
WT30S96-STSX*	\$1,561	96	30
WT30S108-STSX*	\$1,650	108	30
WT30S120-STSX*	\$1,742	120	30

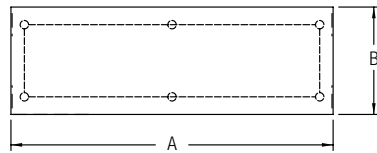
WORK TABLES | STANDARD SERIES

16 GAUGE 304 SERIES STAINLESS STEEL CONSTRUCTION

FLAT TOP - UNDER SHELF



WT30S72-STGX



MODEL	LIST PRICE	OVERALL SIZE	
		A	B
WITH GALVANIZED UNDER SHELF AND LEGS			
WT24S24-STGX	\$505	24	24
WT24S30-STGX	\$550	30	24
WT24S36-STGX	\$617	36	24
WT24S48-STGX	\$730	48	24
WT24S60-STGX	\$897	60	24
WT24S72-STGX	\$1,012	72	24
WT24S84-STGX*	\$1,122	84	24
WT24S96-STGX*	\$1,237	96	24
WT24S108-STGX*	\$1,347	108	24
WT24S120-STGX*	\$1,462	120	24
WT30S30-STGX	\$617	30	30
WT30S36-STGX	\$638	36	30
WT30S48-STGX	\$743	48	30
WT30S60-STGX	\$968	60	30
WT30S72-STGX	\$1,078	72	30
WT30S84-STGX*	\$1,193	84	30
WT30S96-STGX*	\$1,302	96	30
WT30S108-STGX*	\$1,415	108	30
WT30S120-STGX*	\$1,527	120	30

*Indicates a table with 3 sets of legs

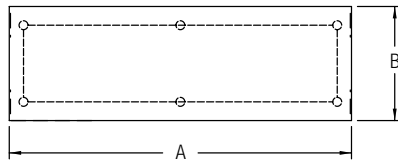
WORK TABLES | STANDARD SERIES

16 GAUGE 304 SERIES STAINLESS STEEL CONSTRUCTION

4" BACK SPLASH - UNDER SHELF



WT30S72-BSX



MODEL	LIST PRICE	OVERALL SIZE	
		A	B
WITH STAINLESS STEEL UNDER SHELF AND LEGS			
WT24S24-BSX	\$871	24	24
WT24S30-BSX	\$897	30	24
WT24S36-BSX	\$926	36	24
WT24S48-BSX	\$1,051	48	24
WT24S60-BSX	\$1,203	60	24
WT24S72-BSX	\$1,355	72	24
WT24S84-BSX*	\$1,546	84	24
WT24S96-BSX*	\$1,689	96	24
WT24S108-BSX*	\$1,849	108	24
WT24S120-BSX*	\$1,982	120	24
WT30S30-BSX	\$950	30	30
WT30S36-BSX	\$970	36	30
WT30S48-BSX	\$1,091	48	30
WT30S60-BSX	\$1,229	60	30
WT30S72-BSX	\$1,493	72	30
WT30S84-BSX*	\$1,757	84	30
WT30S96-BSX*	\$1,836	96	30
WT30S108-BSX*	\$1,940	108	30
WT30S120-BSX*	\$2,048	120	30

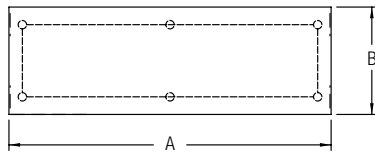
WORK TABLES | STANDARD SERIES

16 GAUGE 304 SERIES STAINLESS STEEL CONSTRUCTION

4" BACK SPLASH - UNDER SHELF



WT30S72-BGX



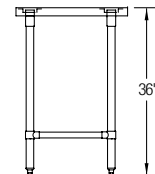
MODEL	LIST PRICE	OVERALL SIZE	
		A	B
WITH GALVANIZED UNDER SHELF AND LEGS			
WT24S24-BGX	\$594	24	24
WT24S30-BGX	\$646	30	24
WT24S36-BGX	\$727	36	24
WT24S48-BGX	\$858	48	24
WT24S60-BGX	\$1,057	60	24
WT24S72-BGX	\$1,190	72	24
WT24S84-BGX*	\$1,321	84	24
WT24S96-BGX*	\$1,454	96	24
WT24S108-BGX*	\$1,585	108	24
WT24S120-BGX*	\$1,718	120	24
WT30S30-BGX	\$727	30	30
WT30S36-BGX	\$753	36	30
WT30S48-BGX	\$871	48	30
WT30S60-BGX	\$1,135	60	30
WT30S72-BGX	\$1,268	72	30
WT30S84-BGX*	\$1,399	84	30
WT30S96-BGX*	\$1,533	96	30
WT30S108-BGX*	\$1,663	108	30
WT30S120-BGX*	\$1,797	120	30

*Indicates a table with 3 sets of legs

WORK TABLES | ECONOMY SERIES

18 GAUGE 300 SERIES STAINLESS STEEL CONSTRUCTION

- Two galvanized hat channels per table.
- 1½" heavy gauge galvanized tubing with fully adjustable 1" feet.
- Available with under shelf.
- Tables are shipped knocked down.
- Work tables larger than 72" have 6 legs.
- Carries NSF certification for foodservice application.



ADD-ON OPTIONS DRAWERS (DRAWERS INCLUDE HARDWARE FOR MOUNTING)			
CT-11-1520E	Overall size: 15" x 20" x 5" Polyslide drawer with plastic liner	\$336.00	CT-19-4 Set of 4 casters, two locking, two non-locking \$162.00
CT-11-1520P	Overall size: 15" x 20" x 5" Roller bearing drawer with plastic liner	\$387.00	CT-19-6 Set of 6 casters, two locking, four non-locking \$254.00
CT-11-1520S	Overall size: 15" x 20" x 5" Roller bearing drawer with 18 gauge 300 series stainless steel liner	\$458.00	CT-74 Set of 4 casters, two locking, two non-locking \$254.00
CT-11-2020P	Overall size: 20" x 20" x 5" Roller bearing drawer with plastic liner	\$519.00	CT-75 Set of 6 casters, two locking, four non-locking \$295.00
CT-11-2020S	Overall size: 20" x 20" x 5" Roller bearing drawer with 18 gauge 300 series stainless steel liner	\$580.00	

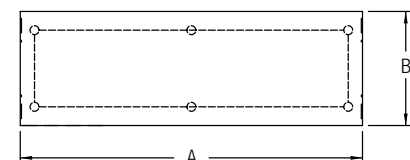
FLAT TOP - UNDER SHELF

EWT30S72-STG-4X

MODEL	LIST PRICE	OVERALL SIZE	
		A	B
WITH 300 SERIES GALVANIZED STEEL UNDER SHELF AND LEGS			
EWT24S24-STG-4X	\$299	24	24
EWT24S30-STG-4X	\$304	30	24
EWT24S36-STG-4X	\$382	36	24
EWT24S48-STG-4X	\$450	48	24
EWT24S60-STG-4X	\$552	60	24
EWT24S72-STG-4X	\$646	72	24
EWT24S96-STG-4X*	\$790	96	24
EWT30S30-STG-4X	\$322	30	30
EWT30S36-STG-4X	\$398	36	30
EWT30S48-STG-4X	\$484	48	30
EWT30S60-STG-4X	\$560	60	30
EWT30S72-STG-4X	\$670	72	30
EWT30S96-STG-4X*	\$829	96	30



EWT30S72-STG-4X



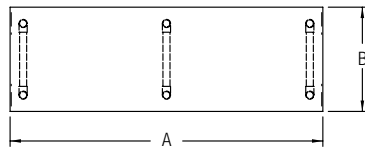
WORK TABLES | ECONOMY SERIES

18 GAUGE 300 SERIES STAINLESS STEEL CONSTRUCTION

2" BACK SPLASH - UNDER SHELF



EWT30S72-STG-24X



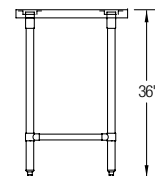
MODEL	LIST PRICE	OVERALL SIZE	
		A	B
WITH 300 SERIES GALVANIZED STEEL UNDER SHELF AND LEGS			
EWT24S24-STG-24X	\$299	24	24
EWT24S30-STG-24X	\$304	30	24
EWT24S36-STG-24X	\$382	36	24
EWT24S48-STG-24X	\$450	48	24
EWT24S60-STG-24X	\$552	60	24
EWT24S72-STG-24X	\$646	72	24
EWT24S96-STG-24X*	\$790	96	24
EWT30S30-STG-24X	\$322	30	30
EWT30S36-STG-24X	\$398	36	30
EWT30S48-STG-24X	\$484	48	30
EWT30S60-STG-24X	\$560	60	30
EWT30S72-STG-24X	\$670	72	30
EWT30S96-STG-24X*	\$829	96	30

*Indicates a table with 3 sets of legs

WORK TABLES | BUDGET SERIES

18 GAUGE 400 SERIES STAINLESS STEEL CONSTRUCTION

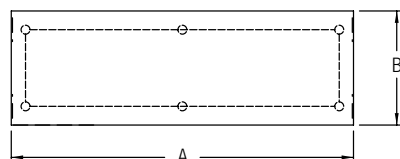
- Two galvanized hat channels per table.
- 1½" heavy gauge galvanized tubing with fully adjustable 1" feet.
- Available with under shelf.
- Tables are shipped knocked down.
- Work tables larger than 72" have 6 legs.
- Carries NSF certification for foodservice application.



FLAT TOP - UNDER SHELF



EWT30S72-STGX

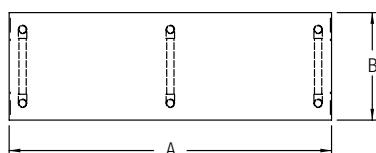


MODEL	LIST PRICE	OVERALL SIZE	
		A	B
EWT24S24-STGX	\$233	24	24
EWT24S30-STGX	\$238	30	24
EWT24S36-STGX	\$275	36	24
EWT24S48-STGX	\$299	48	24
EWT24S60-STGX	\$359	60	24
EWT24S72-STGX	\$382	72	24
EWT24S96-STGX*	\$565	96	24
EWT30S15-STGX	\$225	15	30
EWT30S18-STGX	\$238	18	30
EWT30S30-STGX	\$257	30	30
EWT30S36-STGX	\$288	36	30
EWT30S48-STGX	\$330	48	30
EWT30S60-STGX	\$364	60	30
EWT30S72-STGX	\$403	72	30
EWT30S96-STGX*	\$602	96	30

2" BACK SPLASH - UNDER SHELF



EWT30S72-STG-24X

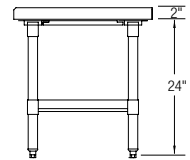


MODEL	LIST PRICE	OVERALL SIZE	
		A	B
EWT24S24-STG-2X	\$233	24	24
EWT24S30-STG-2X	\$238	30	24
EWT24S36-STG-2X	\$275	36	24
EWT24S48-STG-2X	\$299	48	24
EWT24S60-STG-2X	\$359	60	24
EWT24S72-STG-2X	\$382	72	24
EWT24S96-STG-2X*	\$565	96	24
EWT30S30-STG-2X	\$257	30	30
EWT30S36-STG-2X	\$288	36	30
EWT30S48-STG-2X	\$330	48	30
EWT30S60-STG-2X	\$364	60	30
EWT30S72-STG-2X	\$403	72	30
EWT30S96-STG-2X*	\$602	96	30

EQUIPMENT STANDS

16 GAUGE 304 SERIES STAINLESS STEEL CONSTRUCTION

- 2" turn up on three sides.
- Comes with stainless steel (STSX) or galvanized (STGX) adjustable under shelf.
- Two galvanized hat channels per stand.
- 1½" diameter heavy gauge galvanized tubing with plated galvanized leg gussets and high impact corrosion resistant fully adjustable 1" feet.
- Weights based on even distribution.
- Carries NSF certification for foodservice application.
- Equipment stands larger than 60" have 6 legs.

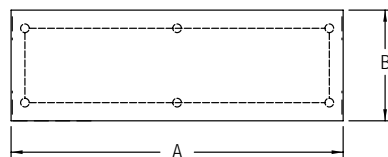


ADD-ON OPTIONS CASTERS

CT-19-4	Set of 4 casters, two locking, two non-locking	\$162.00	CT-74	Set of 4 casters, two locking, two non-locking	\$254.00
CT-19-6	Set of 6 casters, two locking, four non-locking	\$254.00	CT-75	Set of 6 casters, two locking, four non-locking	\$295.00



SES30S36-STSX



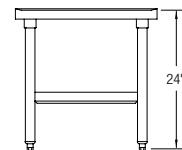
MODEL	LIST PRICE	OVERALL SIZE		WEIGHT CAPACITY
		A	B	
WITH STAINLESS STEEL UNDER SHELF AND LEGS				
SES24S36-STSX	\$602	36	24	550
SES24S48-STSX	\$680	48	24	484
SES24S60-STSX	\$837	60	24	462
SES24S72-STSX	\$1,020	72	24	440
SES30S24-STSX	\$602	24	30	550
SES30S30-STSX	\$628	30	30	550
SES30S36-STSX	\$759	36	30	550
SES30S48-STSX	\$942	48	30	484
SES30S60-STSX	\$1,125	60	30	462
SES30S72-STSX*	\$1,282	72	30	440
SES30S96-STSX*	\$1,569	96	30	550
WITH GALVANIZED UNDER SHELF AND LEGS				
SES24S36-STGX	\$468	36	24	550
SES24S48-STGX	\$536	48	24	484
SES24S60-STGX	\$628	60	24	462
SES24S72-STGX	\$706	72	24	440
SES30S24-STGX	\$445	24	30	550
SES30S30-STGX	\$471	30	30	550
SES30S36-STGX	\$484	36	30	550
SES30S48-STGX	\$550	48	30	484
SES30S60-STGX	\$641	60	30	462
SES30S72-STGX*	\$719	72	30	440
SES30S96-STGX*	\$1,046	96	30	550

*Indicates a table with 3 sets of legs

MIXER STANDS

16 GAUGE 304 SERIES STAINLESS STEEL CONSTRUCTION

- Comes with stainless steel (STSX) or galvanized (STGX) fixed under shelf.
- Two galvanized hat channels per stand and marine edge on all sides.
- 1½" diameter heavy gauge galvanized tubing with plated galvanized leg gussets and high impact corrosion resistant fully adjustable 1" feet.
- Weights based on even distribution.
- Carries NSF certification for foodservice application.

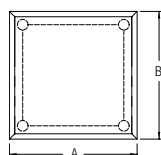


ADD-ON OPTIONS CASTERS

CT-19-4	Set of 4 casters, two locking, two non-locking	\$162.00	CT-74	Set of 4 casters, two locking, two non-locking	\$254.00
CT-19-6	Set of 6 casters, two locking, four non-locking	\$254.00	CT-75	Set of 6 casters, two locking, four non-locking	\$295.00



MS24S30-STSX

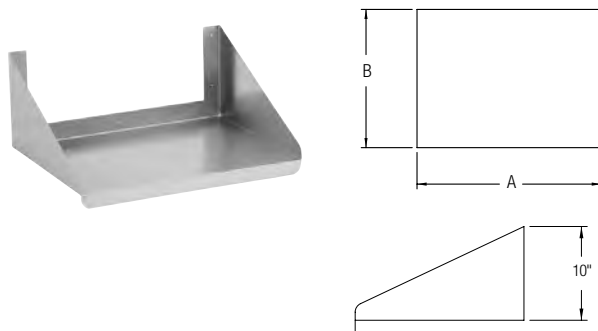


MODEL	LIST PRICE	OVERALL SIZE		WEIGHT CAPACITY
		A	B	
WITH STAINLESS STEEL UNDER SHELF AND LEGS				
MS24S24-STSX	\$785	24	24	700
MS24S30-STSX	\$834	24	30	700
MS30S30-STSX	\$861	30	30	700
MS30S36-STSX	\$955	36	30	700
WITH GALVANIZED UNDER SHELF AND LEGS				
MS24S24-STGX	\$654	24	24	700
MS24S30-STGX	\$693	24	30	700
MS30S30-STGX	\$719	30	30	700

SHELVING & RACKS

- Wall brackets Included.
- Carries NSF certification for foodservice application.
- Mounting hardware not included.

MICROWAVE SHELVES

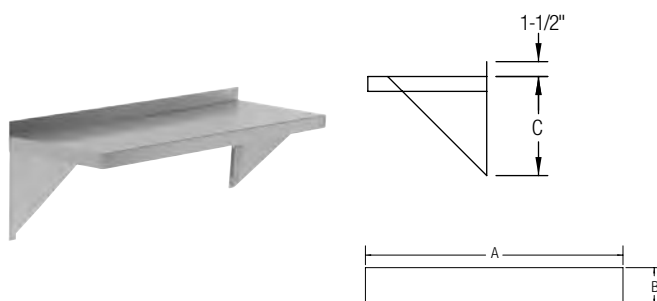


WMMS-18-24X

MODEL	LIST PRICE	OVERALL SIZE	
		A	B
WMMS-18-24X	\$393	24	18
WMMS-24-24X	\$445	24	24

- 18 Gauge 430 series stainless steel.
- Shipped knocked down.

WALL SHELVES



EWMS-12-36X

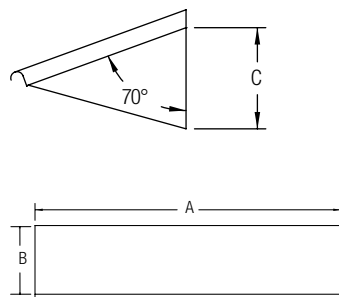
MODEL	LIST PRICE	OVERALL SIZE		
		A	B	C
EWMS-12-24X	\$139	24	12	10
EWMS-12-36X	\$155	36	12	10
EWMS-12-48X	\$184	48	12	10
EWMS-12-60X	\$204	60	12	10
EWMS-12-72X	\$225	72	12	10
EWMS-12-84X	\$246	84	12	10
EWMS-12-96X	\$275	96	12	10
EWMS-14-24X	\$173	24	14	12
EWMS-14-36X	\$194	36	14	12
EWMS-14-48X	\$215	48	14	12
EWMS-14-60X	\$236	60	14	12
EWMS-14-72X	\$257	72	14	12
EWMS-14-84X	\$278	84	14	12
EWMS-14-96X	\$301	96	14	12

- 18 Gauge 430 series stainless steel.
- Shipped knocked down.

SHELVING & RACKS

- Wall brackets Included.
- Carries NSF certification for foodservice application.
- Mounting hardware not included.

SLANT RACKS

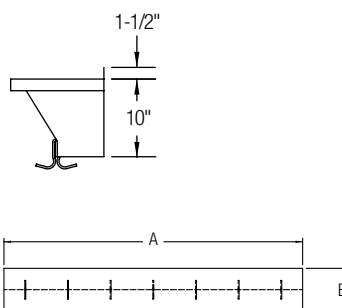


SLANT-42X

MODEL	LIST PRICE	OVERALL SIZE		
		A	B	C
SLANT-21X	\$327	21	20	12
SLANT-42X	\$432	42	20	12
SLANT-63X	\$536	63	20	12
SLANT-84X	\$641	84	20	12

- 18 gauge 300 series stainless steel.
- Shipped knocked down.

WALL SHELVES WITH POT RACK



SLW-S-48X

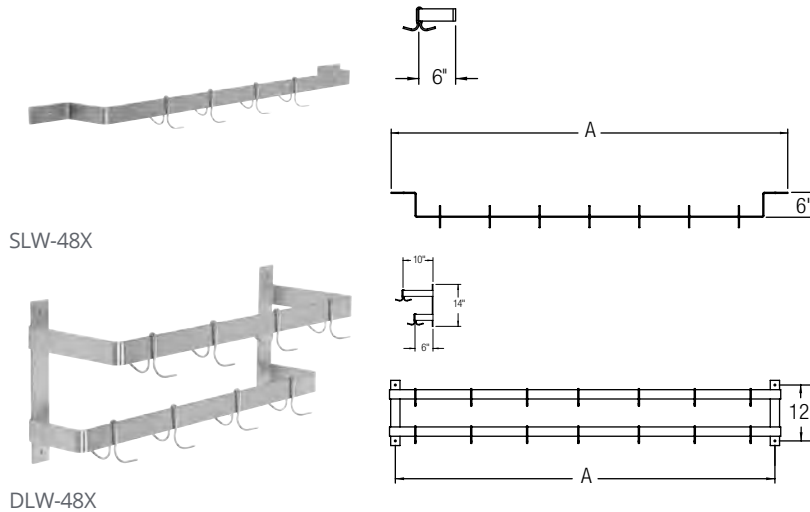
MODEL	LIST PRICE	OVERALL SIZE		
		A	B	# OF HOOKS
SLW-S-48X	\$463	48	12	4
SLW-S-60X	\$492	60	12	5
SLW-S-72X	\$615	72	12	6

- 18 gauge 300 series stainless steel.
- 1/4" x 2" stainless steel flat bar pot rack.
- Pot hooks (1 per foot).
- Shipped knocked down.
- Does not include mounting hardware.

SHELVING & RACKS

- Wall brackets Included.
- Carries NSF certification for foodservice application.
- Mounting hardware not included.

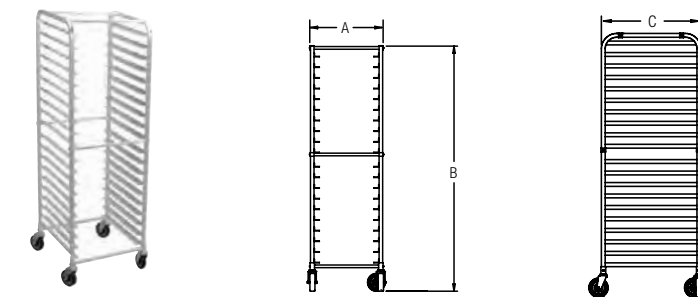
LINE POT RACKS



MODEL	LIST PRICE	LENGTH	NO. OF HOOKS
		A	
SINGLE BAR			
SLW-48X	\$301	48	4
SLW-60X	\$327	60	5
SLW-72X	\$421	72	6
DOUBLE BAR			
DLW-48X	\$701	48	8
DLW-60X	\$753	60	10
DLW-72X	\$811	72	12

- ¼" x 2" stainless steel flat bar pot rack.
- Pot hooks (1 per foot).
- Does not include mounting hardware.
- Carries NSF certification for foodservice application.

PAN RACKS



MODEL	LIST PRICE	OVERALL SIZE			LOAD STYLE
		A	B	C	
APR1820-LX	\$314	20	69	26	Front Load
APR1826-LX	\$327	28	69	18	Side Load

- Reinforced gussets ensure strength and durability for medium duty commercial use.
- 20 pan capacity.
- Available as front load (APR1820-LX) or side load (APR1826-LX).
- 5" polyurethane casters with swivel stems.
- Heavy duty 6063 aluminum.
- Uprights and runners are fully welded.
- Vertical posts are 1" square aluminum tubing (.063" thick).
- Replacement casters available.
- Ships knocked down (assembly required).

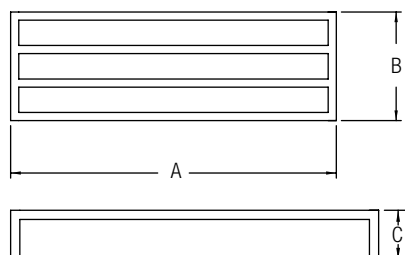
SHELVING & RACKS

- Wall brackets Included.
- Carries NSF certification for foodservice application.
- Mounting hardware not included.

DUNNAGE RACKS



ADR602008-MX



- Sturdy construction ensures strength and durability in any environment.
- Load capacity of 1500 lbs.
- Available in 8" or 12" heights.
- High impact plastic feet included.
- Heavy duty 6063 aluminum.
- Top is constructed of 1½" x 1½" x ⅝" square aluminum tubing welded horizontally on 4½" centers.
- Legs are 1½" x 1½" x ⅝" mitered aluminum.
- Great for use in coolers and freezers.
- Weight capacity based on even distribution.

MODEL	LIST PRICE	OVERALL SIZE			WEIGHT CAPACITY
		A	B	C	
ADR362008-MX	\$108	36	20	8	1500
ADR482008-MX	\$139	48	20	8	1500
ADR602008-MX	\$178	60	20	8	1500
ADR362408-MX	\$123	36	24	8	1500
ADR482408-MX	\$157	48	24	8	1500
ADR602408-MX	\$184	60	24	8	1500
ADR362012-MX	\$108	36	20	12	1500
ADR482012-MX	\$139	48	20	12	1500
ADR602012-MX	\$178	60	20	12	1500
ADR362412-MX	\$123	36	24	12	1500
ADR482412-MX	\$157	48	24	12	1500
ADR602412-MX	\$184	60	24	12	1500

PRE-CHILLERS

- Rated for indoor service.
- Galvanized steel cabinet.
- Hermetically sealed compressor.
- Reduces ambient water temperature to maximize efficiency of an ice or beverage machine.

Elkay ER191 Performance* Test



* Data based on performance of an Elkay ER191 on a Manitowoc SY-1805W in 90°F ambient air, 70-90°F water supply temp., 55-65°F outlet water temp., dispensing 2-4 gallons every 10 minutes.



ERS11Y



ER51Y



ECH8



ER301

MODEL	LIST PRICE	OVERALL SIZE			GPH
		L	W	H	
ERS11Y	\$990	18.75	8.75	17.75	1
ER21Y	\$870	12.5	15.5	22	2
ER51Y	\$1,694	21.5	11.25	25.5	5
ECH8	\$1,092	12.5	15.5	22	8
ECH8GRN	\$1,392	12.5	15.5	22	8
ER101Y	\$1,786	21.5	11.25	25.5	10
ER191	\$2,858	25	14	30	19
ER301	\$3,342	36.75	17	20	30
ERW321	\$3,322	36.75	17	20	32

REETHERMALIZERS

- No texture or flavor changes and will not overheat or burn! Elegantly simple design with extra large capacity.
- Ideal for soups, pastas, potatoes, proteins, and more.
- Due to pouches being segregated, beneficial for special diets.
- Significant labor and footprint reduction.
- Utilized nationally by chain restaurants, convenience stores, healthcare facilities and casinos.

CONSTRUCTION DETAILS

- 16 Gauge 304 stainless steel.
- Hot water bath technology for greater heat transfer efficiency.
- 208V, 3 Phase, 9000W, 25.0 Amps.
- Faucet included.
- Digital thermometer display.
- Hood is not required.

REETHERMALIZER BASKETS

Clam Shell RT-14-2CSSCSA	2" SS CLAM SHELL	\$254.00
Clam Shell RT-14-3SSCSA	3" SS CLAM SHELL	\$274.00
Rack Divider RT-DIV-8	BAG DIVIDER	\$611.00
Rack Divider RT-DIV-4	BAG DIVIDER	\$560.00

SLIDING LID



RTB-14-SL



MODEL	LIST PRICE	OVERALL SIZE		
		L	W	H
WITH CLAM SHELL RACK				
RTC-16-SL	\$16,503	26	34	30
RTC-16-SL-CS	\$16,849	26	34	30
WITH POUCH BASKET RACK				
RTB-14-SL	\$13,636	26	34	30
RTB-14-SL-CS	\$14,004	26	34	30

HINGED LID



HRTB-14-SL



MODEL	LIST PRICE	OVERALL SIZE		
		L	W	H
WITH POUCH BASKET RACK				
HRTB-14-SL	\$13,636	26	34	30
HRTB-14-SL-CS	\$14,004	26	34	30

REETHERMALIZER BASKETS

MODEL	LIST PRICE	DESCRIPTION	
RT-14-2CSSCSA	\$254	2" Clam Shell	Clam Shell
RT-14-3SSCSA	\$274	3" Clam Shell	Clam Shell
RT-14-2	\$958	6 Bag Insert	Pouch Basket
RT-14-3	\$1,101	8 Bag Insert	Pouch Basket

PREMIUM WATER DISPENSERS

Elkay Water Dispensers provide an ecofriendly, space saving solution to bottled water while delivering Chilled Sparkling, Chilled Still and Ambient filtered water on demand.



Blubar Countertop
DSBCF180K

The Blubar Countertop serves as a sleek front of house showpiece for delivering Chilled Sparkling and Chilled Still water.



Fontemagna Compact
DSFCF180UVK

The Fontemagna Compact is a programmable & energy saving unit perfect for back of house high volume execution of Chilled Sparkling, Chilled Still and Ambient temperature water.



Fontemagna Bridge
DSFB1UVK

The Fontemagna Bridge is a programmable & energy saving dispenser that pairs with the Carbonation Chiller to deliver Chilled Sparkling, Chilled Still and Ambient temperature water with additional UV option to kill bacteria at dispensing head.



Column Tap
DSC2K

The Column Tap is a sleek space saving design that pairs with the Carbonation Chiller to deliver Chilled Sparkling and Chilled Still water on demand.



Carbonation Chiller
DSFBF180K


The Carbonation Chiller is a space saving, remote solution that pairs with either our Column Tap or Fontemagna Bridge to deliver high volume Chilled Sparkling, Chilled Still and ambient water.

MODEL	LIST PRICE	OVERALL SIZE			WEIGHT	NUMBER OF TAPS
		L	W	H		
DSBCF180K	\$6,500	14	23	22	77	2
DSFCF180UVK	\$8,000	18	23	20	88	3
DSFB1UVK	\$4,000	14	10	24	33	3
DSC2K	\$1,600	5	9	19	9	2
DSFBF180K	\$4,000	13	18	27	57	-

ACCESSORIES




Please contact your Elkay Foodservice rep for accessories discount.

SENSOR-OPERATED FAUCET ACCESSORY

		DRAWERS	
LK723	\$327.00	CT-11-1520E	\$336.00
Anti-scald thermostatic mixing valve.		Overall size: 15" x 20" x 5".	
Nickel plated brass body.		Polyslide drawer with plastic liner.	
½" SWT inlets and outlet connections.		CT-11-1520P	\$387.00
Check valves on inlets.		Overall size: 15" x 20" x 5".	
Mixed temperature range of 80° – 120°.		Roller bearing drawer with plastic liner.	
Certified under ASSE 1016.		CT-11-1520S	\$458.00
		Overall size: 15" x 20" x 5".	
		Roller bearing drawer with 18 gauge.	
		300 series stainless steel liner.	
		CT-11-2020P	\$519.00
		Overall size: 20" x 20" x 5".	
		Roller bearing drawer with plastic liner.	
		CT-11-2020S	\$580.00
		Overall size: 20" x 20" x 5".	
		Roller bearing drawer with 18 gauge.	
		300 series stainless steel liner.	

RACK SLIDE

RACK SLIDE WITH BASKET

RS-20	\$121.00	Compatible with all of our dish tables.	
18 gauge 300 series stainless steel.		Carries NSF certification for foodservice application.	
Compatible with all of our dish tables.		Tub size: 20" x 20" x 5".	
Carries NSF certification for foodservice application.		RSPB-20	\$254.00
		18 gauge 300 series stainless steel rack slide with plastic basket.	
		RSSB-20	\$438.00
		18 gauge 300 series stainless steel rack slide with stainless steel basket.	

ACCESSORIES

Please contact your Elkay Foodservice rep for accessories discount.

MOP SINK ACCESSORY

LK402
\$34.00

Black heavy duty rubber hose.
36" long.
Standard female hose connection on one end.


LK403
\$138.00

Stainless steel mop holder for FLR mop sinks.
Wall mount.
3 station.


LK404
\$27.00

Stainless steel hose hanger for FLR mop sinks.



ROTARY WASTE DRAINS

Rotary lever operated.

4½" O.D. top stainless steel flange with brass body.

Stainless steel perforated grid and lever arm.

Chrome plated brass tailpiece.

LK24RT
\$143.00

1½" O.D. x 4" tailpiece.

LK25RT
\$149.00

2" O.D. x 4" tailpiece.



LK25RT

CASTERS

4" swivel stem casters.

Locking and non-locking.

Compatible with work tables, equipment stands and mixer stands.

CT-19-4
\$162.00

Set of 4 casters, two locking, two non-locking.

CT-19-6
\$254.00

Set of 6 casters, two locking, four non-locking.



CT-19-4

5" heavy duty casters.

Locking and non-locking.

Compatible with work tables, equipment stands and mixer stands.

CT-74
\$254.00

Set of 4 casters, two locking, two non-locking.

CT-75
\$295.00

Set of 6 casters, two locking, four non-locking.



CT-75



PRICING, TERMS & SPECIFICATIONS

ALL PRICING, TERMS AND SPECIFICATIONS ARE SUBJECT TO CHANGE WITHOUT NOTICE.

ORDER PLACEMENT

- THE ELKAY FOODSERVICE CUSTOMER CARE DEPARTMENT IS HERE TO ASSIST, OPEN MONDAY – FRIDAY AT 1-800-726-0553 OR VIA EMAIL AT CUSTOMERCAREDEPT-SPOKANE@ELKAY.COM.
- ALL PO'S ARE ACKNOWLEDGED UPON RECEIPT WITHIN 24 HOURS. IF YOU HAVE NOT RECEIVED AN ACKNOWLEDGEMENT FOR YOUR PO, PLEASE CONTACT CUSTOMER CARE IMMEDIATELY.
- ELKAY FOODSERVICE HAS EDI CAPABILITIES FOR FASTER ORDER ENTRY.

REQUEST FOR BID OR CUSTOM QUOTES

- ELKAY FOODSERVICE OFFERS A WIDE VARIETY OF MODIFICATION OPTIONS, PRODUCT BUILT TO SPEC AND PURE CUSTOM SOLUTIONS. CONTACT ELKAY FOODSERVICE PRODUCTS TODAY, AND ASK FOR THE BID TEAM. (BIDSEAST@ELKAY.COM & BIDSWEST@ELKAY.COM)

CAUTION: FREIGHT CLAIMS

- BEFORE ACCEPTING ANY SHIPMENT, EXAMINE IT CAREFULLY AND NOTE ANY DAMAGE OR SHORTAGES ON THE BILL OF LADING PRIOR TO SIGNING FOR DELIVERY.
- ALL CLAIMS FOR SHORTAGE OR DAMAGE MUST BE FILED WITH THE CARRIER. TITLE PASSES FROM ELKAY FOODSERVICE PRODUCTS, LLC TO THE PURCHASER AT THE POINT OF ORIGIN OF THE SHIPMENT.
- IF AFTER RECEIPT OF SHIPMENT, CONCEALED DAMAGE IS DISCOVERED, IMMEDIATELY NOTIFY THE DELIVERING CARRIER REQUESTING IMMEDIATE INSPECTION. THE INSPECTION REPORT SHOULD BE USED TO SUPPORT YOUR CLAIMS AGAINST THE CARRIER.
- MISSING ITEMS, DAMAGE, OR CONCEALED DAMAGE MUST BE REPORTED WITHIN 14 DAYS OF RECEIPT OF PRODUCT.

RETURN SHIPMENTS

- WE WILL NOT ACCEPT ANY RETURNED MERCHANDISE UNLESS A WRITTEN AUTHORIZATION HAS BEEN ISSUED. ANY CLAIMS FOR DEFECTIVE MATERIALS OR WORKMANSHIP SHOULD BE EMAILED TO THE FACTORY. CANCELLATIONS ARE NOT ACCEPTED ON ORDERS IN TRANSIT OR CUSTOM PRODUCTS. ALL ORDERS ARE SUBJECT TO ACCEPTANCE BY OUR OFFICE.
- UNUSED, NON-CUSTOM ITEMS IN THEIR ORIGINAL PACKAGING MAY BE RETURNED, FREIGHT PRE-PAID, WITHIN 30 DAYS OF PURCHASE. YOU MUST CALL ELKAY FOODSERVICE PRODUCTS, LLC TO RECEIVE YOUR RETURN MERCHANDISE AUTHORIZATION (RMA). AUTHORIZED RETURNED GOODS WILL BE SUBJECT TO A 30% RESTOCKING CHARGE. ELKAY FOODSERVICE PRODUCTS, LLC RESERVES THE RIGHT TO DENY RETURNED MERCHANDISE THAT DOES NOT MEET THE ABOVE REQUIREMENTS.

WARRANTY

- THE ONLY WARRANTY, EXPRESSED OR IMPLIED, IS A 1 YEAR GUARANTEE AGAINST DEFECT IN WORKMANSHIP AND MATERIAL. THIS WARRANTY DOES NOT APPLY TO DAMAGES WHICH MAY RESULT FROM NEGLIGENCE, ACCIDENTAL OR INTENTIONAL DAMAGE, DAMAGE OR WEAR TO ANY SWIVEL MECHANISM, NORMAL WEAR AND TEAR, MISUSE OF PRODUCT, UNAUTHORIZED REPAIR, EXPOSURE TO EXTREMES IN TEMPERATURE AND HUMIDITY, AND ALTERATION OR ABUSE OF THE PRODUCT.
- FACTORY OBLIGATION UNDER THIS WARRANTY, IS LIMITED, AT THE OPTION OF ELKAY FOODSERVICE PRODUCTS, LLC TO REPAIR OR REPLACE THE PRODUCT (ONE OF EQUAL TYPE AND QUALITY IF THE PRODUCT IS NO LONGER AVAILABLE), WITHIN 90 DAYS AFTER THE RECEIPT OF WRITTEN RECOMMENDATION FROM THE DEALER, PROVIDED NONE OF THE ABOVE EXCEPTIONS ARE EVIDENT. THIS WARRANTY APPLIES STRICTLY TO THE EQUIPMENT AND DOES NOT INCLUDE SERVICE OR LABOR OF ANY KIND, INCLUDING WITHOUT LIMITATION, EXPENSES RELATED TO LABOR OR SERVICE FOR PLUMBING CONNECTIONS, INSTALLATIONS, OR REMOVAL.
- ELKAY FOODSERVICE PRODUCTS, LLC SHALL NOT BE LIABLE FOR ANY LOSS OR DAMAGE ARISING FROM USE, OR FOR CONSEQUENTIAL DAMAGES. THIS WARRANTY GIVES CERTAIN LEGAL RIGHTS AND THERE MAY BE OTHER RIGHTS THAT VARY FROM STATE TO STATE.

PAYMENT TERMS

- STANDARD PAYMENT TERMS ARE NET 30 DAYS AFTER SHIPMENT, UPON APPROVED CREDIT. INTEREST IS CHARGED AT 18% PER ANNUM ON PAST DUE BALANCES. CREDIT CARD ORDERS WILL BE BILLED TO YOUR ACCOUNT PRIOR TO SHIPMENT OF THE PRODUCT.

DISCLAIMER: ALTHOUGH EVERY ATTEMPT HAS BEEN MADE TO ENSURE THE ACCURACY OF THE INFORMATION PROVIDED, WE CANNOT BE HELD RESPONSIBLE FOR TYPOGRAPHICAL OR PRINTING ERRORS. INFORMATION AND SPECIFICATIONS ARE SUBJECT TO CHANGE WITHOUT NOTICE. PLEASE CONFIRM AT TIME OF ORDER.



ELKAY FOODSERVICE PRODUCTS
421 N. FREYA
SPOKANE, WA 99202
PHONE: 1-800-726-0553
FAX: 1-509-535-1403
ELKAYFOODSERVICE.COM
© ELKAY MANUFACTURING COMPANY

ELKAY
Foodservice