

# KoldFront

## Rapid Ship Program



Effective Date: January 1, 2020



*Protecting Your Future*

## 1 THE INDUSTRY'S LEADING WALK-IN MANUFACTURER

KoldFront can easily be installed in practically no time at all.

Corners, wall panels, and doors are quickly assembled on the unit's leveled floor (or screeds), and the ceiling panels lifted into place. Supplied with PC (Pre-Charged) Series Refrigeration. The Kolpak PC refrigeration system includes a condensing unit, evaporator assembly, and is charged with refrigerant sufficient for a 50' line run.

*Note: Outdoor KoldFront units are not available; contact factory for walk-in quote.*

## 2 UNSURPASSED QUALITY

KoldFront coolers and freezers are made with the same rugged, high performance construction that has made Kolpak the leader in walk-in refrigeration.

The KoldFront modular panels of 4" 100% foamed in place non-CFC urethane foam offer superior insulating capabilities. The exterior and interior of top-quality galvalume metal offer an attractive and rugged finish.

KoldFront also offers superior air circulation around the coils making it both economical and efficient to run.

## 3 HOST OF INNOVATIVE STANDARD FEATURES

- Pre-Charged Remote Refrigeration System
- Superior door construction to seal in cold, prevent condensation.
- Posi-Loc panel fasteners for a perfect airtight fit.
- Adjustable spring loaded hinges.
- Interior safety release to prevent accidental entrapment.
- Coved corners on floor panels for easier cleaning, greater sanitation.
- Heated air-vents on freezers to eliminate vacuum and pressure build-up.
- Vapor-proof LED 1803 interior light with convenient switch.
- Easy to adjust digital temperature control
- Newly designed, patented Era bracket floor for foot traffic and rolling carts, approved for up to 1,000 lbs. per sq. ft. uniform load

## 4 NO OTHER MANUFACTURER OFFERS YOU GREATER FLEXIBILITY

KoldFront is flexible enough to be used in virtually any configuration. There's no need for numbered panels.

## 5 RAPID SHIP

Models beginning with KF and KFW are our Rapid Ship models and are available within 5-days after your order has been received.

**5-day shipping on  
KoldFront Walk-Ins with Pre-Charged  
Remote Refrigeration Systems.**

## The KoldFront System includes Walk-In and Pre-Charged Refrigeration



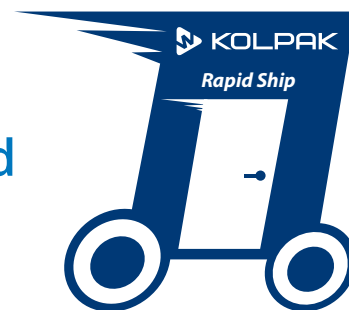
## Ships with remote Pre-Charged Refrigeration System



**Kolpak Condensing Unit**



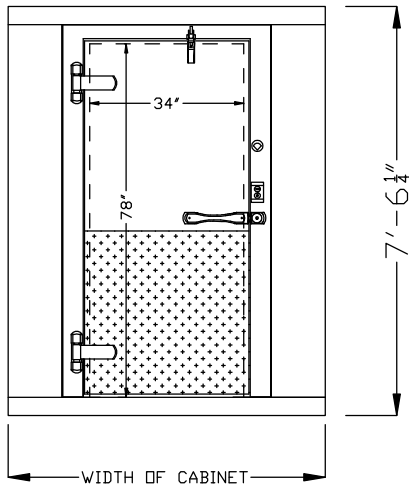
**Kolpak Evaporator**



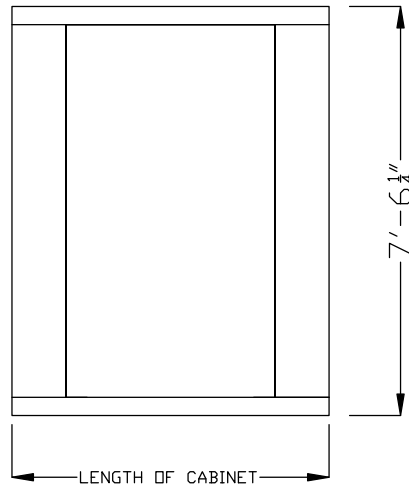
***There are many more reasons to buy KoldFront System  
coolers and freezers...***

**7'6" MODEL**

FRONT OF CABINET

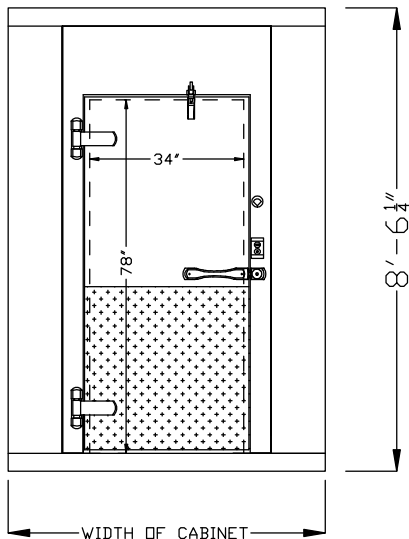


LEFT SIDE OF CABINET

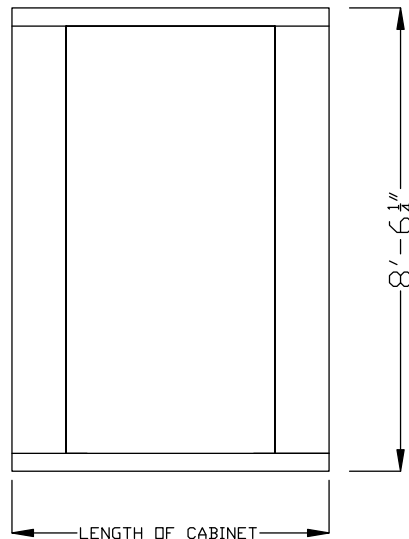


**8'6" MODEL**

FRONT OF CABINET



LEFT SIDE OF CABINET



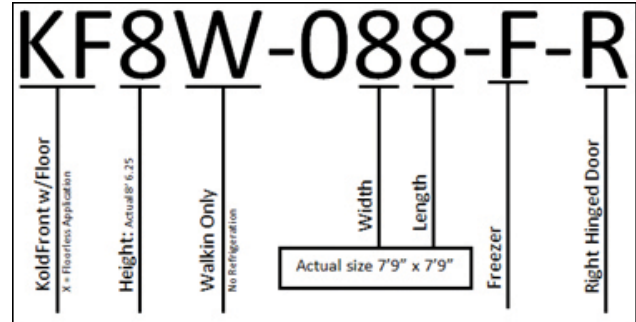
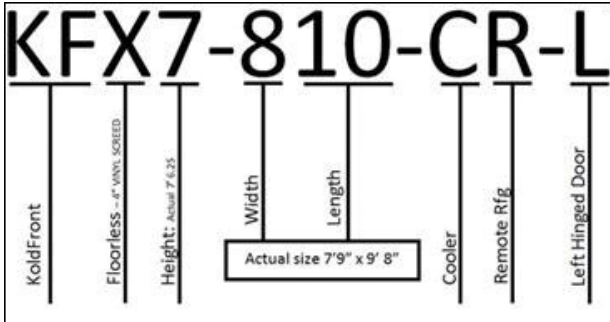
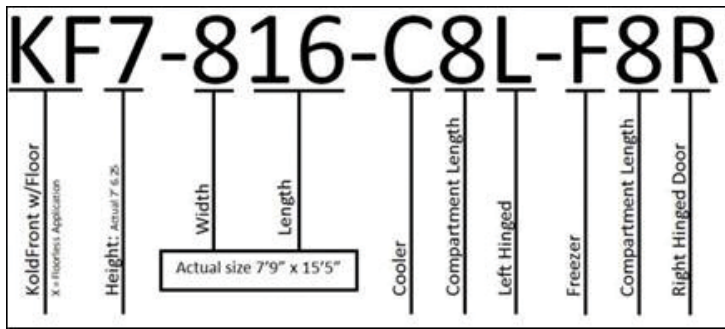
**NOTE:**  
Remote refrigeration evaporators require a drain line supplied by others.

*Specifications subject to change without notice.*

**Key: ● Standard ○ Optional**

	Cooler	Freezer		Cooler	Freezer
ArcticFox LDA	○	○	Interior LED light	●	●
Air cooled condensing units	●	●	Keyed door locks	●	●
Defrost timer	●	●	Low ambient controls	●	●
Dial thermometer	●	●	Magnetic door gaskets	●	●
Door heater		●	NSF panels	●	●
Electric coil defrost system (indoor units)		●	Timed Off coil defrost system	●	●
Expansion valve systems	●	●	Self closing door	●	●
Chicago Relief Valve	○	○	UL door section	●	●
Headmaster	○	○	UL panels (fire rated)	●	●
100% Foamed-in-place polyurethane insulation (4")	●	●	1 year parts warranty	●	●
Foamed in place panel gaskets	●	●	10 year warranty	●	●
Galvalume interior and exterior	●	●	5 year compressor warranty - option	○	○
High pressure safety control	●	●	1 year labor warranty	●	●
Holding only refrigeration systems	●	●	34" wide door opening	●	●
Inside safety release	●	●	Oregon Seal	○	○
Interior ERA .100" aluminum floor	●	●	Seismic Zone Kit	○	○
Exterior Kick Plate	●	●	Exterior Ramp	○	○
Interior Kick Plate	●	●	Strip Curtain	○	○
Scroll Compressors	○	○	1809 Light	○	○
			Trim 8" each	○	○

## Model Nomenclature:



## Refrigeration:

### Standard R404A Refrigeration

HP	Condenser Model	Electrical	Evaporator Coil	Electrical	Condenser Amps	Fan Amps	Htr Amps
R404A Coolers - Medium Temp							
1/2	PC49MOP	208-230/60/1	AM16-052-1EC-PR-4	115/60/1	5.7	0.8	N/A
3/4	PC69MOP	208-230/60/1	AM26-073-1EC-PR-4	115/60/1	7.4	1.6	N/A
1	PC99MOP	208-230/60/1	AM26-117-1EC-PR-4	115/60/1	7.2	1.6	N/A
R404A Freezers - Low Temp							
2	PC199L0P	208-230/60/1	EL26-090-2EC-PR-4	208-230/60/1	18.1	1.0	9.8
2-1/2	PC249L0P	208-230/60/1	EL26-090-2EC-PR-4	208-230/60/1	19.2	1.0	9.8

### Optional R448A Refrigeration

HP	Condenser Model	Electrical	Evaporator Coil	Electrical	Condenser Amps	Fan Amps	Htr Amps
R448A Coolers - Medium Temp							
1/2	PC48MOP	208-230/60/1	AM16-052-1EC-PR-8	115/60/1	5.7	0.8	N/A
3/4	PC68MZOP	208-230/60/1	AM16-073-1EC-PR-4	115/60/1	7	1.6	N/A
1	PC98MZOP	208-230/60/1	AM26-094-1EC-PR-8	115/60/1	11.4	1.6	N/A
1-1/2	PC148MZOP	208-230/60/1	AM26-130-1EC-PR-4	115/60/1	13.4	1.6	N/A
R448A Freezers - Low Temp							
2	PC198LZOP	208-230/60/1	EL16-049-2EC-PR-8	208-230/60/1	15.1	0.5	4.9
2-1/2	PC248LZOP	208-230/60/1	EL26-066-2EC-PR-8	208-230/60/1	19.1	1.0	9.8
3	PC298LZOP	208-230/60/1	EL26-077-2EC-PR-8	208-230/60/1	17.0	1.0	9.8

### Cooler with Floor: 38°F - 7'-6-1/4" High

Model	Actual Size	R404A REFRIGERATION HP	R448A REFRIGERATION HP	Condenser Electrical	Evaporator Coil Electrical	Ship Weight	List Price
KF7-0608-CR	5' 10" x 7' 9"	1/2	1/2	208-230/60/1	115/60/1	1169	\$12,462
KF7-0610-CR	5' 10" x 9' 8"	1/2	1/2	208-230/60/1	115/60/1	1368	\$13,844
KF7-0612-CR	5' 10" x 11' 7"	1/2	1/2	208-230/60/1	115/60/1	1524	\$14,230
KF7-0806-CR	7' 9" x 5' 10"	1/2	1/2	208-230/60/1	115/60/1	1169	\$12,466
KF7-0808-CR	7' 9" x 7' 9"	1/2	1/2	208-230/60/1	115/60/1	1391	\$14,230
KF7-0810-CR	7' 9" x 9' 8"	1/2	1/2	208-230/60/1	115/60/1	1573	\$14,728
KF7-0812-CR	7' 9" x 11' 7"	3/4	3/4	208-230/60/1	115/60/1	1762	\$16,066
KF7-0814-CR	7' 9" x 13' 6"	3/4	3/4	208-230/60/1	115/60/1	1951	\$17,193
KF7-1006-CR	9' 8" x 5' 10"	1/2	1/2	208-230/60/1	115/60/1	1368	\$13,844
KF7-1008-CR	9' 8" x 7' 9"	1/2	1/2	208-230/60/1	115/60/1	1573	\$14,728
KF7-1010-CR	9' 8" x 9' 8"	3/4	3/4	208-230/60/1	115/60/1	1790	\$16,849
KF7-1206-CR	11' 7" x 5' 10"	1/2	1/2	208-230/60/1	115/60/1	1524	\$14,230
KF7-1208-CR	11' 7" x 7' 9"	3/4	3/4	208-230/60/1	115/60/1	1762	\$16,066
KF7-1408-CR	13' 6" x 7' 9"	3/4	3/4	208-230/60/1	115/60/1	1951	\$17,193

### Freezers with Floor: -10°F - 7'-6-1/4" High

Model	Actual Size	R404A REFRIGERATION HP	R448A REFRIGERATION HP	Condenser Electrical	Evaporator Coil Electrical	Ship Weight	List Price
KF7-0608-FR	5' 10" x 7' 9"	1-1/2	2	208-230/60/1	208-230/60/1	1269	\$15,384
KF7-0610-FR	5' 10" x 9' 8"	2	2	208-230/60/1	208-230/60/1	1433	\$18,521
KF7-0612-FR	5' 10" x 11' 7"	2	2 1/2	208-230/60/1	208-230/60/1	1524	\$19,630
KF7-0806-FR	7' 9" x 5' 10"	1-1/2	2	208-230/60/1	208-230/60/1	1269	\$15,384
KF7-0808-FR	7' 9" x 7' 9"	2	2	208-230/60/1	208-230/60/1	1456	\$18,706
KF7-0810-FR	7' 9" x 9' 8"	2	2 1/2	208-230/60/1	208-230/60/1	1573	\$19,872
KF7-0812-FR	7' 9" x 11' 7"	2	2 1/2	208-230/60/1	208-230/60/1	1762	\$21,339
KF7-1006-FR	9' 8" x 5' 10"	2	2	208-230/60/1	208-230/60/1	1433	\$18,521
KF7-1008-FR	9' 8" x 7' 9"	2	2 1/2	208-230/60/1	208-230/60/1	1638	\$19,999
KF7-1010-FR	9' 8" x 9' 8"	2	2 1/2	208-230/60/1	208-230/60/1	1790	\$20,705
KF7-1206-FR	11' 7" x 5' 10"	2	2 1/2	208-230/60/1	208-230/60/1	1524	\$19,630
KF7-1208-FR	11' 7" x 7' 9"	2	2 1/2	208-230/60/1	208-230/60/1	1762	\$21,339

### Coolers Floorless: 38°F - 7'-6-1/4" High

Model	Actual Size	R404A REFRIGERATION HP	R448A REFRIGERATION HP	Condenser Electrical	Evaporator Coil Electrical	Ship Weight	List Price
KFX7-0608-CR	5' 10" x 7' 9"	1/2	1/2	208-230/60/1	115/60/1	977	\$12,266
KFX7-0610-CR	5' 10" x 9' 8"	1/2	1/2	208-230/60/1	115/60/1	1128	\$12,935
KFX7-0612-CR	5' 10" x 11' 7"	1/2	1/2	208-230/60/1	115/60/1	1236	\$13,626
KFX7-0806-CR	7' 9" x 5' 10"	1/2	1/2	208-230/60/1	115/60/1	977	\$12,266
KFX7-0808-CR	7' 9" x 7' 9"	1/2	1/2	208-230/60/1	115/60/1	1135	\$13,263
KFX7-0810-CR	7' 9" x 9' 8"	3/4	3/4	208-230/60/1	115/60/1	1253	\$14,089
KFX7-0812-CR	7' 9" x 11' 7"	3/4	3/4	208-230/60/1	115/60/1	1346	\$15,221
KFX7-0814-CR	7' 9" x 13' 6"	1	3/4	208-230/60/1	115/60/1	1346	\$16,665
KFX7-1006-CR	9' 8" x 5' 10"	1/2	1/2	208-230/60/1	115/60/1	1128	\$12,935
KFX7-1008-CR	9' 8" x 7' 9"	3/4	3/4	208-230/60/1	115/60/1	1253	\$14,089
KFX7-1010-CR	9' 8" x 9' 8"	3/4	3/4	208-230/60/1	115/60/1	1442	\$15,472
KFX7-1206-CR	11' 7" x 5' 10"	1/2	1/2	208-230/60/1	115/60/1	1236	\$13,626
KFX7-1208-CR	11' 7" x 7' 9"	3/4	3/4	208-230/60/1	115/60/1	1346	\$15,221
KFX7-1408-CR	13' 6" x 7' 9"	1	3/4	208-230/60/1	115/60/1	1346	\$16,665

Refrigeration on pg 4

Specifications and Accessories on pg 11

## Coolers with Floor: 38°F - 8'-6-1/4" High

Model	Actual Size	R404A REFRIGERATION HP	R448A REFRIGERATION HP	Condenser Electrical	Evaporator Coil Electrical	Ship Weight	List Price
KF8-0608-CR	5' 10" x 7' 9"	1/2	1/2	208-230/60/1	115/60/1	1169	\$13,157
KF8-0610-CR	5' 10" x 9' 8"	1/2	1/2	208-230/60/1	115/60/1	1368	\$13,844
KF8-0612-CR	5' 10" x 11' 7"	1/2	1/2	208-230/60/1	115/60/1	1574	\$14,230
KF8-0806-CR	7' 9" x 5' 10"	1/2	1/2	208-230/60/1	115/60/1	1169	\$13,157
KF8-0808-CR	7' 9" x 7' 9"	1/2	1/2	208-230/60/1	115/60/1	1391	\$14,230
KF8-0810-CR	7' 9" x 9' 8"	1/2	1/2	208-230/60/1	115/60/1	1573	\$15,097
KF8-0812-CR	7' 9" x 11' 7"	3/4	3/4	208-230/60/1	115/60/1	1762	\$16,457
KF8-0814-CR	7' 9" x 13' 6"	3/4	3/4	208-230/60/1	115/60/1	1951	\$17,403
KF8-1006-CR	9' 8" x 5' 10"	1/2	1/2	208-230/60/1	115/60/1	1368	\$13,844
KF8-1008-CR	9' 8" x 7' 9"	1/2	1/2	208-230/60/1	115/60/1	1573	\$15,097
KF8-1010-CR	9' 8" x 9' 8"	3/4	3/4	208-230/60/1	115/60/1	1790	\$17,631
KF8-1012-CR	9' 8" x 11' 7"	1	3/4	208-230/60/1	115/60/1	2040	\$18,802
KF8-1014-CR	9' 8" x 13' 6"	1	3/4	208-230/60/1	115/60/1	2325	\$20,985
KF8-1206-CR	11' 7" x 5' 10"	1/2	1/2	208-230/60/1	115/60/1	1524	\$14,230
KF8-1208-CR	11' 7" x 7' 9"	3/4	3/4	208-230/60/1	115/60/1	1762	\$16,457
KF8-1210-CR	11' 7" x 9' 8"	1	3/4	208-230/60/1	115/60/1	2040	\$18,802
KF8-1212-CR	11' 7" x 11' 7"	1	1	208-230/60/1	115/60/1	2325	\$21,001
KF8-1214-CR	11' 7" x 13' 6"	1	1	208-230/60/1	115/60/1	2650	\$23,419
KF8-1408-CR	13' 6" x 7' 9"	3/4	3/4	208-230/60/1	115/60/1	1951	\$17,403
KF8-1410-CR	13' 6" x 9' 8"	1	3/4	208-230/60/1	115/60/1	2325	\$20,985
KF8-1412-CR	13' 6" x 11' 7"	1	1	208-230/60/1	115/60/1	2650	\$23,419

## Freezers with Floor: -10°F - 8'-6-1/4" High

Model	Actual Size	R404A REFRIGERATION HP	R448A REFRIGERATION HP	Condenser Electrical	Evaporator Coil Electrical	Ship Weight	List Price
KF8-0608-FR	5' 10" x 7' 9"	2	2	208-230/60/1	208-230/60/1	1269	\$15,384
KF8-0610-FR	5' 10" x 9' 8"	2	2	208-230/60/1	208-230/60/1	1433	\$18,521
KF8-0612-FR	5' 10" x 11' 7"	2	2 1/2	208-230/60/1	208-230/60/1	1524	\$19,630
KF8-0806-FR	7' 9" x 5' 10"	2	2	208-230/60/1	208-230/60/1	1269	\$15,384
KF8-0808-FR	7' 9" x 7' 9"	2	2 1/2	208-230/60/1	208-230/60/1	1456	\$18,706
KF8-0810-FR	7' 9" x 9' 8"	2	2 1/2	208-230/60/1	208-230/60/1	1573	\$19,872
KF8-0812-FR	7' 9" x 11' 7"	2-1/2	2 1/2	208-230/60/1	208-230/60/1	1762	\$21,339
KF8-1006-FR	9' 8" x 5' 10"	2	2	208-230/60/1	208-230/60/1	1433	\$18,508
KF8-1008-FR	9' 8" x 7' 9"	2	2 1/2	208-230/60/1	208-230/60/1	1638	\$19,999
KF8-1010-FR	9' 8" x 9' 8"	2-1/2	3	208-230/60/1	208-230/60/1	1790	\$20,705
KF8-1206-FR	11' 7" x 5' 10"	2	2 1/2	208-230/60/1	208-230/60/1	1524	\$19,630
KF8-1208-FR	11' 7" x 7' 9"	2-1/2	2 1/2	208-230/60/1	208-230/60/1	1762	\$21,339

## Coolers Floorless: 38°F - 8'-6-1/4" High

Model	Actual Size	R404A REFRIGERATION HP	R448A REFRIGERATION HP	Condenser Electrical	Evaporator Coil Electrical	Ship Weight	List Price
KFX8-0608-CR	5' 10" x 7' 9"	1/2	1/2	208-230/60/1	115/60/1	977	\$12,600
KFX8-0610-CR	5' 10" x 9' 8"	1/2	1/2	208-230/60/1	115/60/1	1128	\$13,519
KFX8-0612-CR	5' 10" x 11' 7"	3/4	3/4	208-230/60/1	115/60/1	1236	\$14,693
KFX8-0806-CR	7' 9" x 5' 10"	1/2	1/2	208-230/60/1	115/60/1	977	\$12,723
KFX8-0808-CR	7' 9" x 7' 9"	1/2	1/2	208-230/60/1	115/60/1	1135	\$13,392
KFX8-0810-CR	7' 9" x 9' 8"	3/4	3/4	208-230/60/1	115/60/1	1253	\$14,862
KFX8-0812-CR	7' 9" x 11' 7"	1	3/4	208-230/60/1	115/60/1	1346	\$16,526
KFX8-0814-CR	7' 9" x 13' 6"	1	3/4	208-230/60/1	115/60/1	1951	\$17,129
KFX8-1006-CR	9' 8" x 5' 10"	1/2	1/2	208-230/60/1	115/60/1	1128	\$13,519
KFX8-1008-CR	9' 8" x 7' 9"	3/4	3/4	208-230/60/1	115/60/1	1253	\$14,862
KFX8-1010-CR	9' 8" x 9' 8"	1	3/4	208-230/60/1	115/60/1	1442	\$17,431
KFX8-1012-CR	9' 8" x 11' 7"	1	3/4	208-230/60/1	115/60/1	160	\$18,985
KFX8-1014-CR	9' 8" x 13' 6"	1	1	208-230/60/1	115/60/1	1777	\$20,809
KFX8-1206-CR	11' 7" x 5' 10"	3/4	3/4	208-230/60/1	115/60/1	1236	\$14,693
KFX8-1208-CR	11' 7" x 7' 9"	1	3/4	208-230/60/1	115/60/1	1346	\$16,526
KFX8-1210-CR	11' 7" x 9' 8"	1	3/4	208-230/60/1	115/60/1	1467	\$18,985
KFX8-1212-CR	11' 7" x 11' 7"	1	1	208-230/60/1	115/60/1	1625	\$21,206
KFX8-1214-CR	11' 7" x 13' 6"	1	1 1/2	208-230/60/1	115/60/1	1780	\$23,646
KFX8-1408-CR	13' 6" x 7' 9"	1	3/4	208-230/60/1	115/60/1	1951	\$17,129
KFX8-1410-CR	13' 6" x 9' 8"	1	1	208-230/60/1	115/60/1	1777	\$20,809
KFX8-1412-CR	13' 6" x 11' 7"	1	1 1/2	208-230/60/1	115/60/1	1940	\$23,646

# KoldFront Combos

## Coolers with Floor: 38°F & Freezers with Floor: -10°F - 7'-6-1/4" High

Model	Actual Size	R404A COOLER HP	R448A COOLER HP	R404A FREEZER HP	R448A FREEZER HP	ShgWt	List Price
KF7-0816-C8-F8	7' 9" x 15' 5"	1/2	1/2	2	2	2847	\$32,936
KF7-0818-C10-F8	7' 9" x 17' 4"	3/4	3/4	2	2	3029	\$34,103
KF7-0818-C8-F10	7' 9" x 17' 4"	1/2	1/2	2	2 1/2	2964	\$33,434
KF7-0820-C10-F10	7' 9" x 19' 3"	1/2	1/2	2	2 1/2	3146	\$34,601
KF7-0820-C12-F8	7' 9" x 19' 3"	3/4	3/4	2	2	3218	\$34,772
KF7-0820-C8-F12	7' 9" x 19' 3"	1/2	1/2	2	2 1/2	3153	\$35,569
KF7-0822-C10-F12	7' 9" x 21' 2"	1/2	1/2	2	2 1/2	3335	\$36,068
KF7-0822-C12-F10	7' 9" x 21' 2"	3/4	3/4	2	2 1/2	3335	\$35,938
KF7-0824-C12-F12	7' 9" x 23' 1"	3/4	3/4	2	2 1/2	3524	\$37,404
KF7-1016-C8-F8	9' 8" x 15' 5"	3/4	1/2	2	2 1/2	3146	\$34,601
KF7-1018-C10-F8	9' 8" x 17' 4"	3/4	3/4	2	2 1/2	3363	\$36,722
KF7-1018-C8-F10	9' 8" x 17' 4"	1/2	1/2	2	2 1/2	3363	\$35,433
KF7-1020-C10-F10	9' 8" x 17' 4"	3/4	3/4	2	2 1/2	3580	\$37,554
KF7-1216-C8-F8	9' 8" x 17' 4"	1/2	1/2	2	2 1/2	3524	\$37,404

## Coolers with Floor: 38°F & Freezers with Floor: -10°F - 8'-6-1/4" High

Model	Actual Size	R404A COOLER HP	R448A COOLER HP	R404A FREEZER HP	R448A FREEZER HP	ShgWt	List Price
KF8-0816-C8-F8	7' 9" x 15' 5"	1/2	1/2	2	2 1/2	2847	\$32,936
KF8-0818-C10-F8	7' 9" x 17' 4"	1/2	1/2	2	2 1/2	3029	\$33,803
KF8-0818-C8-F10	7' 9" x 17' 4"	1/2	1/2	2	2 1/2	2964	\$34,103
KF8-0820-C10-F10	7' 9" x 19' 3"	1/2	1/2	2	2 1/2	3153	\$34,969
KF8-0820-C12-F8	7' 9" x 19' 3"	1/2	3/4	2	2 1/2	3218	\$35,165
KF8-0820-C8-F12	7' 9" x 19' 3"	1/2	1/2	2-1/2	2 1/2	3153	\$35,569
KF8-0822-C10-F12	7' 9" x 21' 2"	1/2	1/2	2-1/2	2 1/2	3335	\$36,435
KF8-0822-C12-F10	7' 9" x 21' 2"	3/4	3/4	2	2 1/2	3335	\$36,330
KF8-0824-C12-F12	7' 9" x 23' 1"	3/4	3/4	2-1/2	2 1/2	3524	\$37,797
KF8-1016-C8-F8	9' 8" x 15' 5"	1/2	1/2	2	2 1/2	3146	\$34,969
KF8-1018-C10-F8	9' 8" x 17' 4"	3/4	3/4	2	2 1/2	3363	\$37,503
KF8-1018-C8-F10	9' 8" x 17' 4"	1/2	1/2	2-1/2	3	3363	\$35,802
KF8-1020-C10-F10	9' 8" x 19' 3"	3/4	3/4	2-1/2	3	3580	\$38,336
KF8-1022-C12-F10	9' 8" x 21' 2"	1	3/4	2-1/2	3	3830	\$39,507
KF8-1022-C14-F8	9' 8" x 21' 2"	1	3/4	2	2 1/2	3830	\$40,984
KF8-1024-C14-F10	9' 8" x 23' 1"	1	3/4	2-1/2	3	4115	\$41,690
KF8-1216-C8-F8	11' 7" x 15' 5"	3/4	1/2	2-1/2	2 1/2	3524	\$37,797
KF8-1218-C10-F8	11' 7" x 17' 4"	1	3/4	2-1/2	2 1/2	3802	\$29,115
KF8-1220-C12-F8	11' 7" x 19' 3"	1	1	2-1/2	2 1/2	4087	\$42,340
KF8-1222-C14-F8	11' 7" x 21' 2"	1	1	2-1/2	2 1/2	4412	\$44,758

Refrigeration on pg 4

Specifications and Accessories on pg 11

# KoldFront Combos Panels Only

## Coolers with Floor: 38°F with Floor: -10°F - 7'-6-1/4" High

Model	Actual Size	Ship Weight	Panel List
KF7W-0816-C8-F8	7' 9" x 15' 5"	2348	\$23,753
KF7W-0818-C10-F8	7' 9" x 17' 4"	2519	\$23,709
KF7W-0818-C8-F10	7' 9" x 17' 4"	2519	\$24,977
KF7W-0820-C10-F10	7' 9" x 19' 3"	2617	\$24,933
KF7W-0820-C12-F8	7' 9" x 19' 3"	2617	\$25,114
KF7W-0820-C8-F12	7' 9" x 19' 3"	2617	\$26,518
KF7W-0822-C10-F12	7' 9" x 21' 2"	2788	\$26,474
KF7W-0822-C12-F10	7' 9" x 21' 2"	2788	\$26,337
KF7W-0824-C12-F12	7' 9" x 23' 1"	2977	\$27,878
KF7W-1016-C8-F8	9' 8" x 15' 5"	2599	\$24,933
KF7W-1018-C10-F8	9' 8" x 17' 4"	2816	\$27,160
KF7W-1018-C8-F10	9' 8" x 17' 4"	2816	\$25,804
KF7W-1020-C10-F10	11' 7" x 19' 3"	3033	\$28,033
KF7W-1216-C8-F8	11' 7" x 15' 5"	2977	\$27,878

## Coolers with Floor: 38°F with Floor: -10°F - 7'-6-1/4" High

Model	Actual Size	Ship Weight	Panel List
KF8W-0816-C8-F8	7' 9" x 15' 5"	2348	\$23,753
KF8W-0818-C10-F8	7' 9" x 17' 4"	2519	\$24,095
KF8W-0818-C8-F10	7' 9" x 17' 4"	2519	\$24,977
KF8W-0820-C10-F10	7' 9" x 19' 3"	2606	\$25,319
KF8W-0820-C12-F8	7' 9" x 19' 3"	2606	\$25,524
KF8W-0820-C8-F12	7' 9" x 19' 3"	2606	\$26,518
KF8W-0822-C10-F12	7' 9" x 21' 2"	2788	\$26,859
KF8W-0822-C12-F10	7' 9" x 21' 2"	2788	\$26,748
KF8W-0824-C12-F12	7' 9" x 23' 1"	2977	\$28,288
KF8W-1016-C8-F8	9' 8" x 15' 5"	2599	\$25,319
KF8W-1018-C10-F8	9' 8" x 17' 4"	2816	\$27,979
KF8W-1018-C8-F10	9' 8" x 17' 4"	2816	\$26,193
KF8W-1020-C10-F10	9' 8" x 19' 3"	3033	\$28,854
KF8W-1022-C12-F10	9' 8" x 21' 2"	3283	\$30,085
KF8W-1022-C14-F8	9' 8" x 21' 2"	3283	\$31,502
KF8W-1024-C14-F10	9' 8" x 23' 1"	3568	\$32,375
KF8W-1216-C8-F8	11' 7" x 15' 5"	2977	\$28,288
KF8W-1218-C10-F8	11' 7" x 17' 4"	3255	\$30,751
KF8W-1220-C12-F8	11' 7" x 19' 3"	3540	\$33,059
KF8W-1222-C14-F8	11' 7" x 21' 2"	3865	\$34,764

Specifications and Accessories on pg 11



# Kold-Front Panels Only

## Coolers with Floor: 38°F - 7'-6-1/4" High

Model	Actual Size	Ship Weight	Panel List
KF7W-0608-C	5' 10" x 7' 9"	957	\$8,419
KF7W-0610-C	5' 10" x 9' 8"	1156	\$9,865
KF7W-0612-C	5' 10" x 11' 7"	1301	\$9,703
KF7W-0806-C	7' 9" x 5' 10"	957	\$8,419
KF7W-0808-C	7' 9" x 7' 9"	1179	\$10,271
KF7W-0810-C	7' 9" x 9' 8"	1350	\$10,228
KF7W-0812-C	7' 9" x 11' 7"	1539	\$11,631
KF7W-0814-C	7' 9" x 13' 6"	1728	\$12,815
KF7W-1006-C	9' 8" x 5' 10"	1156	\$9,865
KF7W-1008-C	9' 8" x 7' 9"	1350	\$10,228
KF7W-1010-C	9' 8" x 9' 8"	1567	\$12,454
KF7W-1206-C	11' 7" x 5' 10"	1301	\$9,703
KF7W-1208-C	11' 7" x 7' 9"	1539	\$11,631
KF7W-1408-C	13' 6" x 7' 9"	1728	\$12,815

## Freezers with Floor: -10°F - 7'-6-1/4" High

Model	Actual Size	Ship Weight	Panel List
KF7W-0608-F	5' 10" x 7' 9"	109	\$10,434
KF7W-0610-F	5' 10" x 9' 8"	1146	\$13,287
KF7W-0612-F	5' 10" x 11' 7"	1237	\$14,450
KF7W-0806-F	7' 9" x 5' 10"	109	\$9,331
KF7W-0808-F	7' 9" x 7' 9"	1169	\$13,482
KF7W-0810-F	7' 9" x 9' 8"	1249	\$14,705
KF7W-0812-F	7' 9" x 11' 7"	1438	\$16,246
KF7W-1006-F	9' 8" x 5' 10"	1146	\$13,287
KF7W-1008-F	9' 8" x 7' 9"	1314	\$14,839
KF7W-1010-F	9' 8" x 9' 8"	1466	\$15,580
KF7W-1206-F	11' 7" x 5' 10"	1237	\$14,450

## Floorless Coolers: 38°F - 7'-6-1/4" High

Model	Actual Size	Ship Weight	Panel List
KFX7W-0608-C	5' 10" x 7' 9"	765	\$8,209
KFX7W-0610-C	5' 10" x 9' 8"	916	\$8,910
KFX7W-0612-C	5' 10" x 11' 7"	1013	\$9,069
KFX7W-0806-C	7' 9" x 5' 10"	765	\$8,209
KFX7W-0808-C	7' 9" x 7' 9"	923	\$9,257
KFX7W-0810-C	7' 9" x 9' 8"	1030	\$9,556
KFX7W-0812-C	7' 9" x 11' 7"	1123	\$10,745
KFX7W-0814-C	7' 9" x 13' 6"	1312	\$12,260
KFX7W-1006-C	9' 8" x 5' 10"	905	\$8,910
KFX7W-1008-C	9' 8" x 7' 9"	1041	\$9,556
KFX7W-1010-C	9' 8" x 9' 8"	1219	\$11,007
KFX7W-1206-C	11' 7" x 5' 10"	1013	\$9,069
KFX7W-1208-C	11' 7" x 7' 9"	1123	\$10,745
KFX7W-1408-C	13' 6" x 7' 9"	1312	\$12,260

Specifications and Accessories on pg 11

### Coolers with Floors: 38°F - 8'-6-1/4" High

Model	Actual Size	Ship Weight	Panel List
KF8W-0608-C	5' 10" x 7' 9"	957	\$9,143
KF8W-0610-C	5' 10" x 9' 8"	1156	\$9,866
KF8W-0612-C	5' 10" x 11' 7"	1301	\$9,703
KF8W-0806-C	7' 9" x 5' 10"	957	\$9,143
KF8W-0808-C	7' 9" x 7' 9"	1179	\$10,271
KF8W-0810-C	7' 9" x 9' 8"	1350	\$10,613
KF8W-0812-C	7' 9" x 11' 7"	1539	\$12,042
KF8W-0814-C	7' 9" x 13' 6"	1728	\$13,035
KF8W-1006-C	9' 8" x 5' 10"	1156	\$9,866
KF8W-1008-C	9' 8" x 7' 9"	1350	\$10,613
KF8W-1010-C	9' 8" x 9' 8"	1567	\$13,274
KF8W-1012-C	8' 8" x 11' 7"	1817	\$14,506
KF8W-1014-C	9' 8" x 13' 6"	2102	\$16,797
KF8W-1206-C	11' 7" x 5' 10"	1301	\$9,703
KF8W-1208-C	11' 7" x 7' 9"	1539	\$15,350
KF8W-1210-C	11' 7" x 9' 8"	1817	\$14,506
KF8W-1212-C	11' 7" x 11' 7"	2102	\$16,814
KF8W-1214-C	11' 7" x 13' 6"	2413	\$18,519
KF8W-1408-C	13' 6" x 7' 9"	1728	\$13,035
KF8W-1410-C	13' 6" x 9' 8"	2102	\$16,797
KF8W-1412-C	13' 6" x 11' 7"	2413	\$18,519

### Freezers with Floors: -10°F - 8'-6-1/4" High

Model	Actual Size	Ship Weight	Panel List
KF8W-0608-F	5' 10" x 7' 9"	109	\$9,992
KF8W-0610-F	5' 10" x 9' 8"	1146	\$13,287
KF8W-0612-F	5' 10" x 11' 7"	1237	\$14,450
KF8W-0806-F	7' 9" x 5' 10"	109	\$9,992
KF8W-0808-F	7' 9" x 7' 9"	1243	\$13,482
KF8W-0810-F	7' 9" x 9' 8"	1249	\$14,705
KF8W-0812-F	7' 9" x 11' 7"	1438	\$16,246
KF8W-1006-F	9' 8" x 5' 10"	1146	\$13,287
KF8W-1008-F	9' 8" x 7' 9"	1314	\$14,839
KF8W-1010-F	9' 8" x 9' 8"	1466	\$15,580
KF8W-1206-F	11' 7" x 5' 10"	1237	\$14,450
KF8W-1208-F	11' 7" x 7' 9"	1438	\$16,246

### Floorless Coolers: 38°F - 8'-6-1/4" High

Model	Actual Size	Ship Weight	Panel List
KFX8W-0608-C	5' 10" x 7' 9"	765	\$8,811
KFX8W-0610-C	5' 10" x 9' 8"	916	\$9,660
KFX8W-0612-C	5' 10" x 11' 7"	1013	\$10,335
KFX8W-0806-C	7' 9" x 5' 10"	765	\$8,811
KFX8W-0808-C	7' 9" x 7' 9"	923	\$9,526
KFX8W-0810-C	7' 9" x 9' 8"	1030	\$10,515
KFX8W-0812-C	7' 9" x 11' 7"	1123	\$12,297
KFX8W-0814-C	7' 9" x 13' 6"	1312	\$12,941
KFX8W-1006-C	9' 8" x 5' 10"	916	\$9,660
KFX8W-1008-C	9' 8" x 7' 9"	1030	\$10,515
KFX8W-1010-C	9' 8" x 9' 8"	1219	\$13,265
KFX8W-1012-C	9' 8" x 11' 7"	1377	\$14,928
KFX8W-1014-C	9' 8" x 13' 6"	1554	\$16,879
KFX8W-1206-C	11' 7" x 5' 10"	1013	\$10,335
KFX8W-1208-C	11' 7" x 7' 9"	1123	\$12,297
KFX8W-1210-C	11' 7" x 9' 8"	1244	\$14,928
KFX8W-1212-C	11' 7" x 11' 7"	1402	\$17,304
KFX8W-1214-C	11' 7" x 13' 6"	1543	\$19,058
KFX8W-1408-C	13' 6" x 7' 9"	1312	\$12,941
KFX8W-1410-C	13' 6" x 9' 8"	1554	\$16,879
KFX8W-1412-C	13' 6" x 11' 7"	1703	\$19,058

## Specifications:

**Interior/Exterior Finish:** 26 Ga Embossed Galvalume

**Door:** 34x78, standard hardware package with dial thermometer - includes interior & exterior diamond tread kick plates

**Insulation:** 4" 100% foam-in-place polyurethane

**Floored Application:** Era .100 Smooth Aluminum - actual height 7' 6.25"/8' 6.25"

**Floorless Application:** 4: Vinyl Screed - actual height 7' 6.25"/8' 6.25"

Outdoor units must be quoted by factory and is not available for 5 day shipping

**Refrigeration:** PC 120 Series Remote 208-230/60/1, Freezer Evap 208-230/60/1, Cooler Evap 115/60/1

## Options & Accessories:

Seismic Kit (available for floored applications only) - \$450 net

Oregon Seal - \$50 net per door

Chicago Relief Valve - \$30 net per unit

Headmaster - \$55 net per unit

Extended Compressor Warranty

Exterior Ramp 36" deep - \$320 net per unit

Kason Strip Curtain - \$75 net per unit

Kason 1809 Interior Light - \$245 net per unit

Trim 3x3x96L - \$40 net per unit

Air Shield - \$1,593 net per unit

## Outdoor Package Requirements:

Outdoor units must be quoted by factory and are not available for the 5 day Rapid Ship Program.

### Refrigeration Accessories

Optional 5 Year - Compressor Warranty	
H.P	Net
1/2	\$102
3/4	\$113
1	\$121
1-1/2	\$144
2	\$176
2-1/2	\$204
3	\$233

### Warranty

Kolpak\* ("Company") warrants to the original purchaser this refrigeration system to be free from defects in material and workmanship under normal use and service in accordance with the terms of this Warranty. This Warranty is issued to the original purchaser/user at the original installation location and is in lieu of all other warranties expressed or implied. Completion of the Welbilt Foodservice Walk-In & Refrigeration Claim Form is required for consideration of claims to be processed under parts and/or labor warranty. All warranty service shall be performed by an authorized service provider. The claim form must be received within (60) sixty days of the date of service. Reimbursement for local parts purchase must include a copy of the wholesale invoice. Company does not pay both travel time and mileage. Company reserves the right to pay no more than the average commercial hourly rates and part prices within the particular state or region of the country where the service is performed.

### Parts

Foamed in-place panels are warranted to the original purchaser to be free from defects in material and workmanship, under normal use and service, for a period of (10) ten years from the first to occur of the original start-up date by a factory authorized servicer, or six (6) months from factory ship date. Painted surfaces will be warranted for (1) one year from the original start-up date. Component parts, doors, and assemblies (except bulbs) found to be defective in material or workmanship are warranted for a period of (1) one year from original start-up date by a factory authorized servicer. First year

compressor failures shall be exchanged over the counter by the compressor manufacturer's wholesaler. If the optional four year compressor warranty is purchased and the original compressor fails after expiration of the one year parts warranty, Company will provide a direct replacement or authorize local purchase of a replacement compressor. If local purchase is authorized, the original wholesale invoice along with the serial tag from the original defective compressor shall be sent to Company for reimbursement. Labor, freight, travel, and additional parts/supplies are not covered under the extended compressor warranty. Replacement parts purchased from Company will be warranted for a period of (90) ninety days from factory ship date.

### Labor

Panels, hardware, and electrical components (except bulbs) are covered by a (1) one year labor warranty for the replacement of component parts that are defective in material or workmanship.

Refrigeration systems that are not factory refrigerant charged (PR, Multi-Pak, Rack, Large Room systems, etc.) are covered by a (30) thirty day labor warranty for the replacement of component parts that are defective in material or workmanship. Refrigeration systems that are factory refrigerant charged (PC, PCL, Polar Pak, etc.) are covered by a (1) one year labor warranty for the replacement of component parts that are defective in material or workmanship.

- Normal maintenance, adjustments, and cleaning.
- Repairs due to unauthorized modifications.
- Damage from improper installation.
- Damage or delays occurring in transit.
- Damage from misuse, abuse, neglect, or accidents.
- Damage or loss of product, property, income, or profit.
- Legacy floor panels are not warranted under the following conditions:
  - Wet mopping or use of a water hose for cleaning.
  - Wheel traffic (carts, dollies, etc.) on foot traffic floors (substrate backed) floors.
  - Weight loads exceeding 700 psf on foot traffic floors.
  - Weight loads exceeding 1000 psf on rolling cart floors.
- New Era floors (After October 1, 2017) are not warranted under the following conditions:
  - Wet mopping or use of a water hose for cleaning.
  - Weight loads exceeding 1000 psf on standard floors.
  - Weight loads exceeding 5000 psf on structural floors.

The warranty period will begin at the first to occur of original start-up date, validated by a legal document (certificate of occupancy, bill of sale, etc.), or (90) ninety days from factory ship date.

### Exclusions from Warranty Coverage:

**Limitations of Liability** The preceding paragraphs set forth the exclusive remedy for all claims based on failure of, or defect in, Walk-in refrigeration systems sold hereunder, whether the failure or defect arises before or during the warranty period, and whether a claim, however instituted, is based on contract, indemnity, warranty, tort (including negligence), strict liability, implied by statute, common-law or otherwise, Company and agents shall not be liable for any claims for personal injuries or consequential damages or loss, howsoever caused, including but not limited to loss of profits, additional labor costs, loss of refrigerant or food products, or for any delay in the performance of this Warranty due to causes beyond its control. Upon the expiration of the warranty period, all such liability shall terminate. THE FOREGOING WARRANTIES ARE EXCLUSIVE AND IN LIEU OF ALL OTHER WARRANTIES, WHETHER WRITTEN, ORAL, IMPLIED OR STATUTORY. NO IMPLIED WARRANTY OF MERCHANTABILITY OR FITNESS FOR PARTICULAR PURPOSE SHALL APPLY, AND COMPANY DOES NOT WARRANT ANY PRODUCTS OR SERVICES OF OTHERS.

### Remedies

The liability of Company for breach of any warranty obligation hereunder is limited to: (i) the repair or replacement of the Walk-in on which the liability is based, or with respect to services, re-performance of the services; or (ii) at Company's option, the refund of the amount paid for said equipment or services. Any breach by Company with respect to any item or unit of equipment or services shall be deemed a breach with respect to that item or unit or service only.

Kolpak - 2915 Tennessee Avenue North, Parsons, TN 38363, Phone: 800-225-9916

\*Kolpak is an operating division of Welbilt, Inc.



*Protecting Your Future*

+1 800.826.7036 | [WWW.KOLPAK.COM](http://WWW.KOLPAK.COM)



Welbilt offers fully-integrated kitchen systems and our products are backed by KitchenCare<sup>®</sup> aftermarket parts and service. Welbilt's portfolio of award-winning brands includes **Cleveland<sup>™</sup>**, **Convotherm<sup>®</sup>**, **Crem<sup>®</sup>**, **Delfield<sup>®</sup>**, **fitkitchen<sup>®</sup>**, **Frymaster<sup>®</sup>**, **Garland<sup>®</sup>**, **Kolpak<sup>®</sup>**, **Lincoln<sup>®</sup>**, **Manitowoc<sup>®</sup>**, **Merco<sup>®</sup>**, **Merrychef<sup>®</sup>** and **Multiplex<sup>®</sup>**.

*Bringing innovation to the table* • [welbilt.com](http://welbilt.com)