



KoldFront
Rapid Ship Program

Effective Date: March 1, 2019



1 THE INDUSTRY'S LEADING WALK-IN MANUFACTURER

KoldFront can easily be installed in practically no time at all.

Corners, wall panels, and doors are quickly assembled on the unit's leveled floor (or screeds), and the ceiling panels lifted into place. Supplied with PC (Pre-Charged) Series Refrigeration. The Kolpak PC refrigeration system includes a condensing unit, evaporator assembly, and is charged with refrigerant sufficient for a 50' line run.

Note: Outdoor KoldFront units are not available; contact factory for walk-in quote.

2 UNSURPASSED QUALITY

KoldFront coolers and freezers are made with the same rugged, high performance construction that has made Kolpak the leader in walk-in refrigeration.

The KoldFront modular panels of 4" 100% foamed in place non-CFC urethane foam offer superior insulating capabilities. The exterior and interior of top-quality galvalume metal offer an attractive and rugged finish.

KoldFront also offers superior air circulation around the coils making it both economical and efficient to run.

3 HOST OF INNOVATIVE STANDARD FEATURES

- Pre-Charged Remote Refrigeration System
- Superior door construction to seal in cold, prevent condensation.
- Posi-Loc panel fasteners for a perfect airtight fit.
- Adjustable spring loaded hinges.
- Interior safety release to prevent accidental entrapment.
- Coved corners on floor panels for easier cleaning, greater sanitation.
- Heated air-vents on freezers to eliminate vacuum and pressure build-up.
- Vapor-proof LED 1803 interior light with convenient switch.
- Easy to adjust digital temperature control
- Newly designed, patented Era bracket floor for foot traffic and rolling carts, approved for up to 1,000 lbs. per sq. ft. uniform load

4 NO OTHER MANUFACTURER OFFERS YOU GREATER FLEXIBILITY

KoldFront is flexible enough to be used in virtually any configuration. There's no need for numbered panels.

5 RAPID SHIP

Models beginning with KF and KFW are our Rapid Ship models and are available within 5-days after your order has been received.

**5-day shipping on
KoldFront Walk-Ins with Pre-Charged
Remote Refrigeration Systems.**

The KoldFront System includes Walk-In and Pre-Charged Refrigeration



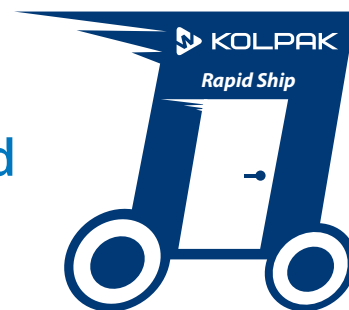
Ships with remote Pre-Charged Refrigeration System



Kolpak Condensing Unit



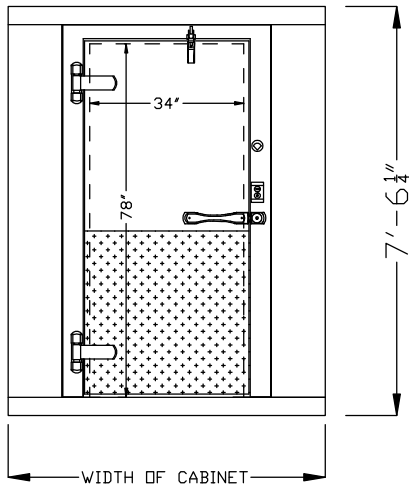
Kolpak Evaporator



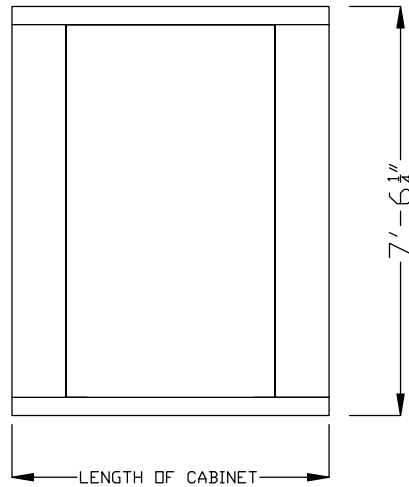
***There are many more reasons to buy KoldFront System
coolers and freezers...***

7'6" MODEL

FRONT OF CABINET

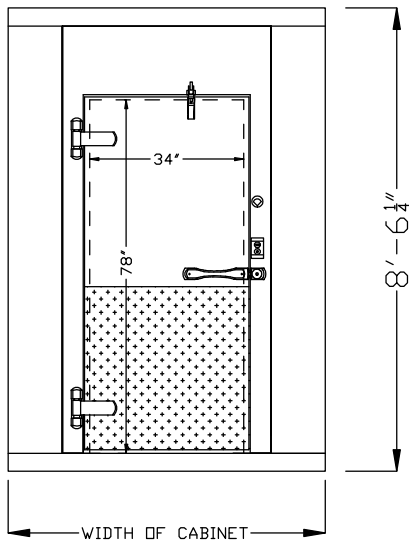


LEFT SIDE OF CABINET

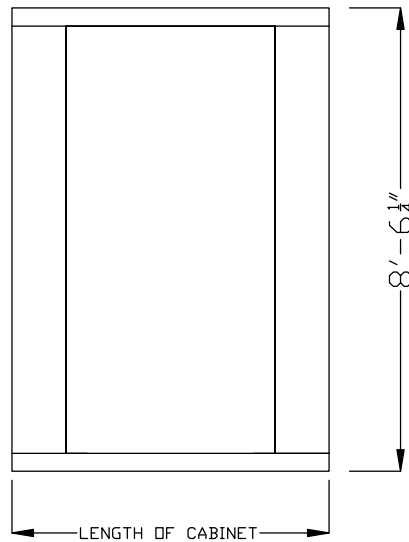


8'6" MODEL

FRONT OF CABINET



LEFT SIDE OF CABINET



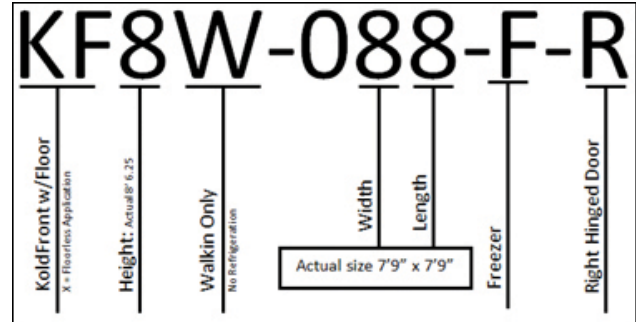
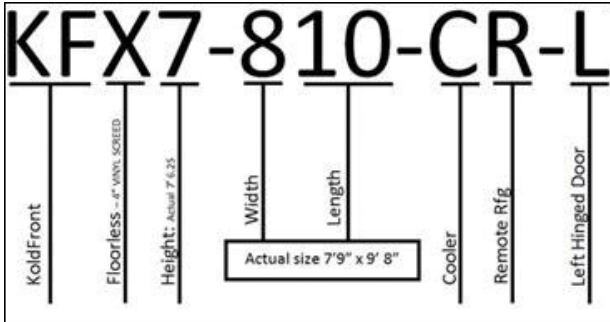
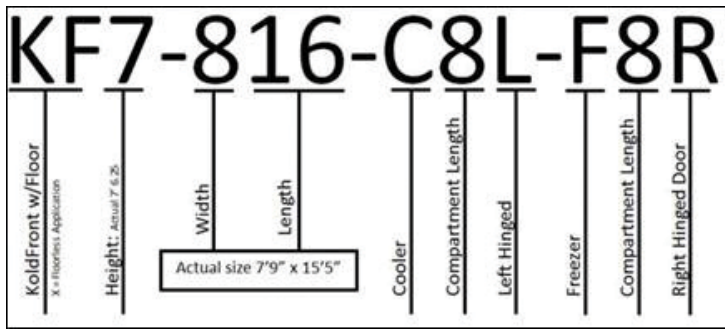
NOTE:
Remote refrigeration evaporators require a drain line supplied by others.

Specifications subject to change without notice.

Key: ● Standard ○ Optional

	Cooler	Freezer		Cooler	Freezer
ArcticFox LDA	●	●	Interior LED light	●	●
Air cooled condensing units	●	●	Keyed door locks	●	●
Defrost timer	●	●	Low ambient controls	●	●
Dial thermometer	●	●	Magnetic door gaskets	●	●
Door heater		●	NSF panels	●	●
Electric coil defrost system (indoor units)		●	Timed Off coil defrost system	●	●
Expansion valve systems	●	●	Self closing door	●	●
Chicago Relief Valve	○	○	UL door section	●	●
Headmaster	○	○	UL panels (fire rated)	●	●
100% Foamed-in-place polyurethane insulation (4")	●	●	1 year parts warranty	●	●
Foamed in place panel gaskets	●	●	10 year warranty	●	●
Galvalume interior and exterior	●	●	5 year compressor warranty - option	○	○
High pressure safety control	●	●	1 year labor warranty	●	●
Holding only refrigeration systems	●	●	34" wide door opening	●	●
Inside safety release	●	●	Oregon Seal	○	○
Interior ERA .100" aluminum floor	●	●	Seismic Zone Kit	○	○
Exterior Kick Plate	●	●	Exterior Ramp	○	○
Interior Kick Plate	●	●	Strip Curtain	○	○
Scroll Compressors	○	○	1809 Light	○	○
			Trim 8" each	○	○

Model Nomenclature:



Refrigeration:

Standard R404A Refrigeration

HP	Condenser Model	Electrical	Evaporator Coil	Electrical	Condenser Amps	Fan Amps	Htr Amps
R404A Coolers - Medium Temp							
1/2	PC49MOP	208-230/60/1	AM16-052-1EC-PR-4	115/60/1	5.7	0.8	N/A
3/4	PC69MOP	208-230/60/1	AM26-073-1EC-PR-4	115/60/1	7.4	1.6	N/A
1	PC99MOP	208-230/60/1	AM26-117-1EC-PR-4	115/60/1	7.2	1.6	N/A
R404A Freezers - Low Temp							
2	PC199L0P	208-230/60/1	EL26-090-2EC-PR-4	208-230/60/1	18.1	1.0	9.8
2-1/2	PC249L0P	208-230/60/1	EL26-090-2EC-PR-4	208-230/60/1	19.2	1.0	9.8
3	PC299L0P	208-230/60/1	EL36-121-2EC-PR-4	208-230/60/1	21.4	1.5	14.3

Optional R448A Refrigeration

HP	Condenser Model	Electrical	Evaporator Coil	Electrical	Condenser Amps	Fan Amps	Htr Amps
R448A Coolers - Medium Temp							
1/2	PC48MOP	208-230/60/1	AM16-052-1EC-PR-8	115/60/1	5.7	0.8	N/A
3/4	PC68MZOP	208-230/60/1	AM16-073-1EC-PR-4	115/60/1	7	1.6	N/A
1	PC98MZOP	208-230/60/1	AM26-094-1EC-PR-8	115/60/1	11.4	1.6	N/A
1-1/2	PC148MZOP	208-230/60/1	AM26-130-1EC-PR-4	115/60/1	13.4	1.6	N/A
R448A Freezers - Low Temp							
2	PC198LZOP	208-230/60/1	EL16-049-2EC-PR-8	208-230/60/1	15.1	0.5	4.9
2-1/2	PC248LZOP	208-230/60/1	EL26-066-2EC-PR-8	208-230/60/1	19.1	1.0	9.8
3	PC298LZOP	208-230/60/1	EL26-077-2EC-PR-8	208-230/60/1	17.0	1.0	9.8

Cooler with Floor: 38°F - 7'-6-1/4" High

Model	Actual Size	R404A REFRIGERATION HP	R448A REFRIGERATION HP	Condenser Electrical	Evaporator Coil Electrical	Ship Weight	List Price
KF7-0608-CR	5' 10" x 7' 9"	1/2	1/2	208-230/60/1	115/60/1	1169	\$11,869
KF7-0610-CR	5' 10" x 9' 8"	1/2	1/2	208-230/60/1	115/60/1	1368	\$13,185
KF7-0612-CR	5' 10" x 11' 7"	1/2	1/2	208-230/60/1	115/60/1	1524	\$13,552
KF7-0806-CR	7' 9" x 5' 10"	1/2	1/2	208-230/60/1	115/60/1	1169	\$11,872
KF7-0808-CR	7' 9" x 7' 9"	1/2	1/2	208-230/60/1	115/60/1	1391	\$13,552
KF7-0810-CR	7' 9" x 9' 8"	1/2	1/2	208-230/60/1	115/60/1	1573	\$14,027
KF7-0812-CR	7' 9" x 11' 7"	3/4	3/4	208-230/60/1	115/60/1	1762	\$15,301
KF7-0814-CR	7' 9" x 13' 6"	3/4	3/4	208-230/60/1	115/60/1	1951	\$16,374
KF7-1006-CR	9' 8" x 5' 10"	1/2	1/2	208-230/60/1	115/60/1	1368	\$13,185
KF7-1008-CR	9' 8" x 7' 9"	1/2	1/2	208-230/60/1	115/60/1	1573	\$14,027
KF7-1010-CR	9' 8" x 9' 8"	3/4	3/4	208-230/60/1	115/60/1	1790	\$16,047
KF7-1206-CR	11' 7" x 5' 10"	1/2	1/2	208-230/60/1	115/60/1	1524	\$13,552
KF7-1208-CR	11' 7" x 7' 9"	3/4	3/4	208-230/60/1	115/60/1	1762	\$15,301
KF7-1408-CR	13' 6" x 7' 9"	3/4	3/4	208-230/60/1	115/60/1	1951	\$16,374

Freezers with Floor: -10°F - 7'-6-1/4" High

Model	Actual Size	R404A REFRIGERATION HP	R448A REFRIGERATION HP	Condenser Electrical	Evaporator Coil Electrical	Ship Weight	List Price
KF7-0610-FR	5' 10" x 9' 8"	2	2	208-230/60/1	208-230/60/1	1433	\$17,639
KF7-0612-FR	5' 10" x 11' 7"	2	2 1/2	208-230/60/1	208-230/60/1	1524	\$18,695
KF7-0806-FR	7' 9" x 5' 10"	2	2	208-230/60/1	208-230/60/1	1269	\$14,651
KF7-0808-FR	7' 9" x 7' 9"	2	2	208-230/60/1	208-230/60/1	1456	\$17,815
KF7-0810-FR	7' 9" x 9' 8"	2	2 1/2	208-230/60/1	208-230/60/1	1573	\$18,926
KF7-0812-FR	7' 9" x 11' 7"	2-1/2	2 1/2	208-230/60/1	208-230/60/1	1762	\$20,323
KF7-1006-FR	9' 8" x 5' 10"	2	2	208-230/60/1	208-230/60/1	1433	\$17,639
KF7-1008-FR	9' 8" x 7' 9"	2	2 1/2	208-230/60/1	208-230/60/1	1638	\$19,047
KF7-1010-FR	9' 8" x 9' 8"	2-1/2	2 1/2	208-230/60/1	208-230/60/1	1790	\$19,719
KF7-1206-FR	11' 7" x 5' 10"	2	2 1/2	208-230/60/1	208-230/60/1	1524	\$18,695
KF7-1208-FR	11' 7" x 7' 9"	2-1/2	2 1/2	208-230/60/1	208-230/60/1	1762	\$20,323

Coolers Floorless: 38°F - 7'-6-1/4" High

Model	Actual Size	R404A REFRIGERATION HP	R448A REFRIGERATION HP	Condenser Electrical	Evaporator Coil Electrical	Ship Weight	List Price
KFX7-0608-CR	5' 10" x 7' 9"	1/2	1/2	208-230/60/1	115/60/1	977	\$11,682
KFX7-0610-CR	5' 10" x 9' 8"	1/2	1/2	208-230/60/1	115/60/1	1128	\$12,319
KFX7-0612-CR	5' 10" x 11' 7"	3/4	1/2	208-230/60/1	115/60/1	1236	\$12,977
KFX7-0806-CR	7' 9" x 5' 10"	1/2	1/2	208-230/60/1	115/60/1	977	\$11,682
KFX7-0808-CR	7' 9" x 7' 9"	1/2	1/2	208-230/60/1	115/60/1	1135	\$12,632
KFX7-0810-CR	7' 9" x 9' 8"	3/4	3/4	208-230/60/1	115/60/1	1253	\$13,418
KFX7-0812-CR	7' 9" x 11' 7"	3/4	3/4	208-230/60/1	115/60/1	1346	\$14,496
KFX7-0814-CR	7' 9" x 13' 6"	1	3/4	208-230/60/1	115/60/1	1346	\$15,871
KFX7-1006-CR	9' 8" x 5' 10"	1/2	1/2	208-230/60/1	115/60/1	1128	\$12,319
KFX7-1008-CR	9' 8" x 7' 9"	3/4	3/4	208-230/60/1	115/60/1	1253	\$13,418
KFX7-1010-CR	9' 8" x 9' 8"	1	3/4	208-230/60/1	115/60/1	1442	\$14,735
KFX7-1206-CR	11' 7" x 5' 10"	3/4	3/4	208-230/60/1	115/60/1	1236	\$12,977
KFX7-1208-CR	11' 7" x 7' 9"	3/4	3/4	208-230/60/1	115/60/1	1346	\$14,496
KFX7-1408-CR	13' 6" x 7' 9"	1	3/4	208-230/60/1	115/60/1	1346	\$15,871

Refrigeration on pg 4

Specifications and Accessories on pg 11

Coolers with Floor: 38°F - 8'-6-1/4" High

Model	Actual Size	R404A REFRIGERATION HP	R448A REFRIGERATION HP	Condenser Electrical	Evaporator Coil Electrical	Ship Weight	List Price
KF8-0608-CR	5' 10" x 7' 9"	1/2	1/2	208-230/60/1	115/60/1	1169	\$12,530
KF8-0610-CR	5' 10" x 9' 8"	1/2	1/2	208-230/60/1	115/60/1	1368	\$13,185
KF8-0612-CR	5' 10" x 11' 7"	1/2	1/2	208-230/60/1	115/60/1	1574	\$13,552
KF8-0806-CR	7' 9" x 5' 10"	1/2	1/2	208-230/60/1	115/60/1	1169	\$12,530
KF8-0808-CR	7' 9" x 7' 9"	1/2	1/2	208-230/60/1	115/60/1	1391	\$13,552
KF8-0810-CR	7' 9" x 9' 8"	3/4	1/2	208-230/60/1	115/60/1	1573	\$14,378
KF8-0812-CR	7' 9" x 11' 7"	3/4	3/4	208-230/60/1	115/60/1	1762	\$15,673
KF8-0814-CR	7' 9" x 13' 6"	1	3/4	208-230/60/1	115/60/1	1951	\$16,574
KF8-1006-CR	9' 8" x 5' 10"	1/2	1/2	208-230/60/1	115/60/1	1368	\$13,185
KF8-1008-CR	9' 8" x 7' 9"	3/4	1/2	208-230/60/1	115/60/1	1573	\$14,378
KF8-1010-CR	9' 8" x 9' 8"	3/4	3/4	208-230/60/1	115/60/1	1790	\$16,791
KF8-1012-CR	9' 8" x 11' 7"	1	3/4	208-230/60/1	115/60/1	2040	\$17,907
KF8-1014-CR	9' 8" x 13' 6"	1	3/4	208-230/60/1	115/60/1	2325	\$19,986
KF8-1206-CR	11' 7" x 5' 10"	1/2	1/2	208-230/60/1	115/60/1	1524	\$13,552
KF8-1208-CR	11' 7" x 7' 9"	3/4	3/4	208-230/60/1	115/60/1	1762	\$15,673
KF8-1210-CR	11' 7" x 9' 8"	1	3/4	208-230/60/1	115/60/1	2040	\$17,907
KF8-1212-CR	11' 7" x 11' 7"	1	1	208-230/60/1	115/60/1	2325	\$20,001
KF8-1214-CR	11' 7" x 13' 6"	1	1	208-230/60/1	115/60/1	2650	\$22,304
KF8-1408-CR	13' 6" x 7' 9"	1	3/4	208-230/60/1	115/60/1	1951	\$16,574
KF8-1410-CR	13' 6" x 9' 8"	1	3/4	208-230/60/1	115/60/1	2325	\$19,986
KF8-1412-CR	13' 6" x 11' 7"	1	1	208-230/60/1	115/60/1	2650	\$22,304

Freezers with Floor: -10°F - 8'-6-1/4" High

Model	Actual Size	R404A REFRIGERATION HP	R448A REFRIGERATION HP	Condenser Electrical	Evaporator Coil Electrical	Ship Weight	List Price
KF8-0608-FR	5' 10" x 7' 9"	2	2	208-230/60/1	208-230/60/1	1269	\$14,651
KF8-0610-FR	5' 10" x 9' 8"	2	2	208-230/60/1	208-230/60/1	1433	\$17,639
KF8-0612-FR	5' 10" x 11' 7"	2-1/2	2 1/2	208-230/60/1	208-230/60/1	1524	\$18,695
KF8-0806-FR	7' 9" x 5' 10"	2	2	208-230/60/1	208-230/60/1	1269	\$14,651
KF8-0808-FR	7' 9" x 7' 9"	2	2 1/2	208-230/60/1	208-230/60/1	1456	\$17,815
KF8-0810-FR	7' 9" x 9' 8"	2-1/2	2 1/2	208-230/60/1	208-230/60/1	1573	\$18,926
KF8-0812-FR	7' 9" x 11' 7"	3	2 1/2	208-230/60/1	208-230/60/1	1762	\$20,323
KF8-1006-FR	9' 8" x 5' 10"	2	2	208-230/60/1	208-230/60/1	1433	\$17,627
KF8-1008-FR	9' 8" x 7' 9"	2-1/2	2 1/2	208-230/60/1	208-230/60/1	1638	\$19,047
KF8-1010-FR	9' 8" x 9' 8"	3	3	208-230/60/1	208-230/60/1	1790	\$19,719
KF8-1206-FR	11' 7" x 5' 10"	2-1/2	2 1/2	208-230/60/1	208-230/60/1	1524	\$18,695
KF8-1208-FR	11' 7" x 7' 9"	3	2 1/2	208-230/60/1	208-230/60/1	1762	\$20,323

Coolers with Floor: 38°F - 8'-6-1/4" High

Model	Actual Size	R404A REFRIGERATION HP	R448A REFRIGERATION HP	Condenser Electrical	Evaporator Coil Electrical	Ship Weight	List Price
KFX8-0608-CR	5' 10" x 7' 9"	1/2	1/2	208-230/60/1	115/60/1	977	\$12,000
KFX8-0610-CR	5' 10" x 9' 8"	3/4	1/2	208-230/60/1	115/60/1	1128	\$12,875
KFX8-0612-CR	5' 10" x 11' 7"	3/4	3/4	208-230/60/1	115/60/1	1236	\$13,993
KFX8-0806-CR	7' 9" x 5' 10"	1/2	1/2	208-230/60/1	115/60/1	977	\$12,117
KFX8-0808-CR	7' 9" x 7' 9"	1/2	1/2	208-230/60/1	115/60/1	1135	\$12,754
KFX8-0810-CR	7' 9" x 9' 8"	3/4	3/4	208-230/60/1	115/60/1	1253	\$14,154
KFX8-0812-CR	7' 9" x 11' 7"	1	3/4	208-230/60/1	115/60/1	1346	\$15,740
KFX8-0814-CR	7' 9" x 13' 6"	1	3/4	208-230/60/1	115/60/1	1951	\$16,313
KFX8-1006-CR	9' 8" x 5' 10"	3/4	1/2	208-230/60/1	115/60/1	1128	\$12,875
KFX8-1008-CR	9' 8" x 7' 9"	3/4	3/4	208-230/60/1	115/60/1	1253	\$14,154
KFX8-1010-CR	9' 8" x 9' 8"	1	3/4	208-230/60/1	115/60/1	1442	\$16,601
KFX8-1012-CR	9' 8" x 11' 7"	1	3/4	208-230/60/1	115/60/1	160	\$18,081
KFX8-1014-CR	9' 8" x 13' 6"	1	1	208-230/60/1	115/60/1	1777	\$19,818
KFX8-1206-CR	11' 7" x 5' 10"	3/4	3/4	208-230/60/1	115/60/1	1236	\$13,993
KFX8-1208-CR	11' 7" x 7' 9"	1	3/4	208-230/60/1	115/60/1	1346	\$15,740
KFX8-1210-CR	11' 7" x 9' 8"	1	3/4	208-230/60/1	115/60/1	1467	\$18,081
KFX8-1212-CR	11' 7" x 11' 7"	1	1	208-230/60/1	115/60/1	1625	\$20,196
KFX8-1214-CR	11' 7" x 13' 6"	1	1 1/2	208-230/60/1	115/60/1	1780	\$22,520
KFX8-1408-CR	13' 6" x 7' 9"	1	3/4	208-230/60/1	115/60/1	1951	\$16,313
KFX8-1410-CR	13' 6" x 9' 8"	1	1	208-230/60/1	115/60/1	1777	\$19,818
KFX8-1412-CR	13' 6" x 11' 7"	1	1 1/2	208-230/60/1	115/60/1	1940	\$22,520

KoldFront Combos

Coolers with Floor: 38°F & Freezers with Floor: -10°F - 7'-6-1/4" High

Model	Actual Size	R404A COOLER HP	R448A COOLER HP	R404A FREEZER HP	R448A FREEZER HP	ShgWt	List Price
KF7-0816-C8-F8	7' 9" x 15' 5"	1/2	1/2	2	2	2847	\$31,368
KF7-0818-C10-F8	7' 9" x 17' 4"	3/4	3/4	2	2	3029	\$32,479
KF7-0818-C8-F10	7' 9" x 17' 4"	1/2	1/2	2	2 1/2	2964	\$31,842
KF7-0820-C10-F10	7' 9" x 19' 3"	1/2	1/2	2	2 1/2	3146	\$32,953
KF7-0820-C12-F8	7' 9" x 19' 3"	3/4	3/4	2	2	3218	\$33,116
KF7-0820-C8-F12	7' 9" x 19' 3"	1/2	1/2	2-1/2	2 1/2	3153	\$33,875
KF7-0822-C10-F12	7' 9" x 21' 2"	1/2	1/2	2-1/2	2 1/2	3335	\$34,350
KF7-0822-C12-F10	7' 9" x 21' 2"	3/4	3/4	2	2 1/2	3335	\$34,227
KF7-0824-C12-F12	7' 9" x 23' 1"	3/4	3/4	2-1/2	2 1/2	3524	\$35,623
KF7-1016-C8-F8	9' 8" x 15' 5"	3/4	1/2	2	2 1/2	3146	\$32,953
KF7-1018-C10-F8	9' 8" x 17' 4"	3/4	3/4	2	2 1/2	3363	\$34,973
KF7-1018-C8-F10	9' 8" x 17' 4"	1/2	1/2	2-1/2	2 1/2	3363	\$33,746
KF7-1020-C10-F10	9' 8" x 17' 4"	3/4	3/4	2-1/2	2 1/2	3580	\$35,766
KF7-1216-C8-F8	9' 8" x 17' 4"	1/2	1/2	2-1/2	2 1/2	3524	\$35,623

Coolers with Floor: 38°F & Freezers with Floor: -10°F - 8'-6-1/4" High

Model	Actual Size	R404A COOLER HP	R448A COOLER HP	R404A FREEZER HP	R448A FREEZER HP	ShgWt	List Price
KF8-0816-C8-F8	7' 9" x 15' 5"	1/2	1/2	2	2 1/2	2847	\$31,368
KF8-0818-C10-F8	7' 9" x 17' 4"	3/4	1/2	2	2 1/2	3029	\$32,193
KF8-0818-C8-F10	7' 9" x 17' 4"	1/2	1/2	2-1/2	2 1/2	2964	\$32,479
KF8-0820-C10-F10	7' 9" x 19' 3"	3/4	1/2	2-1/2	2 1/2	3153	\$33,304
KF8-0820-C12-F8	7' 9" x 19' 3"	3/4	3/4	2	2 1/2	3218	\$33,490
KF8-0820-C8-F12	7' 9" x 19' 3"	1/2	1/2	3	2 1/2	3153	\$33,875
KF8-0822-C10-F12	7' 9" x 21' 2"	3/4	1/2	3	2 1/2	3335	\$34,700
KF8-0822-C12-F10	7' 9" x 21' 2"	3/4	3/4	2-1/2	2 1/2	3335	\$34,600
KF8-0824-C12-F12	7' 9" x 23' 1"	3/4	3/4	3	2 1/2	3524	\$35,997
KF8-1016-C8-F8	9' 8" x 15' 5"	1/2	1/2	2-1/2	2 1/2	3146	\$33,304
KF8-1018-C10-F8	9' 8" x 17' 4"	3/4	3/4	2-1/2	2 1/2	3363	\$35,717
KF8-1018-C8-F10	9' 8" x 17' 4"	1/2	1/2	3	3	3363	\$34,097
KF8-1020-C10-F10	9' 8" x 19' 3"	3/4	3/4	3	3	3580	\$36,510
KF8-1022-C12-F10	9' 8" x 21' 2"	1	3/4	3	3	3830	\$37,626
KF8-1022-C14-F8	9' 8" x 21' 2"	1	3/4	2-1/2	2 1/2	3830	\$39,032
KF8-1024-C14-F10	9' 8" x 23' 1"	1	3/4	3	3	4115	\$39,705
KF8-1216-C8-F8	11' 7" x 15' 5"	1/2	1/2	3	2 1/2	3524	\$35,997
KF8-1218-C10-F8	11' 7" x 17' 4"	1	3/4	3	2 1/2	3802	\$27,729
KF8-1220-C12-F8	11' 7" x 19' 3"	1	1	3	2 1/2	4087	\$40,324
KF8-1222-C14-F8	11' 7" x 21' 2"	1	1	3	2 1/2	4412	\$42,627

Refrigeration on pg 4

Specifications and Accessories on pg 11

KoldFront Combos Panels Only

Coolers with Floor: 38°F with Floor: -10°F - 7'-6-1/4" High

Model	Actual Size	Ship Weight	Panel List
KF7W-0816-C8-F8	7' 9" x 15' 5"	2348	\$22,622
KF7W-0818-C10-F8	7' 9" x 17' 4"	2519	\$22,580
KF7W-0818-C8-F10	7' 9" x 17' 4"	2519	\$23,788
KF7W-0820-C10-F10	7' 9" x 19' 3"	2617	\$23,746
KF7W-0820-C12-F8	7' 9" x 19' 3"	2617	\$23,918
KF7W-0820-C8-F12	7' 9" x 19' 3"	2617	\$25,255
KF7W-0822-C10-F12	7' 9" x 21' 2"	2788	\$25,213
KF7W-0822-C12-F10	7' 9" x 21' 2"	2788	\$25,083
KF7W-0824-C12-F12	7' 9" x 23' 1"	2977	\$26,550
KF7W-1016-C8-F8	9' 8" x 15' 5"	2599	\$23,746
KF7W-1018-C10-F8	9' 8" x 17' 4"	2816	\$25,867
KF7W-1018-C8-F10	9' 8" x 17' 4"	2816	\$24,575
KF7W-1020-C10-F10	11' 7" x 19' 3"	3033	\$26,698
KF7W-1216-C8-F8	11' 7" x 15' 5"	2977	\$26,550

Coolers with Floor: 38°F with Floor: -10°F - 7'-6-1/4" High

Model	Actual Size	Ship Weight	Panel List
KF8W-0816-C8-F8	7' 9" x 15' 5"	2348	\$22,622
KF8W-0818-C10-F8	7' 9" x 17' 4"	2519	\$22,948
KF8W-0818-C8-F10	7' 9" x 17' 4"	2519	\$23,788
KF8W-0820-C10-F10	7' 9" x 19' 3"	2606	\$24,113
KF8W-0820-C12-F8	7' 9" x 19' 3"	2606	\$24,309
KF8W-0820-C8-F12	7' 9" x 19' 3"	2606	\$25,255
KF8W-0822-C10-F12	7' 9" x 21' 2"	2788	\$25,580
KF8W-0822-C12-F10	7' 9" x 21' 2"	2788	\$25,474
KF8W-0824-C12-F12	7' 9" x 23' 1"	2977	\$26,941
KF8W-1016-C8-F8	9' 8" x 15' 5"	2599	\$24,113
KF8W-1018-C10-F8	9' 8" x 17' 4"	2816	\$26,647
KF8W-1018-C8-F10	9' 8" x 17' 4"	2816	\$24,946
KF8W-1020-C10-F10	9' 8" x 19' 3"	3033	\$27,480
KF8W-1022-C12-F10	9' 8" x 21' 2"	3283	\$28,652
KF8W-1022-C14-F8	9' 8" x 21' 2"	3283	\$30,002
KF8W-1024-C14-F10	9' 8" x 23' 1"	3568	\$30,833
KF8W-1216-C8-F8	11' 7" x 15' 5"	2977	\$26,941
KF8W-1218-C10-F8	11' 7" x 17' 4"	3255	\$29,287
KF8W-1220-C12-F8	11' 7" x 19' 3"	3540	\$31,485
KF8W-1222-C14-F8	11' 7" x 21' 2"	3865	\$33,109

Specifications and Accessories on pg 11

Kold-Front Panels Only

Coolers with Floor: 38°F - 7'-6-1/4" High

Model	Actual Size	Ship Weight	Panel List
KF7W-0608-C	5' 10" x 7' 9"	957	\$8,018
KF7W-0610-C	5' 10" x 9' 8"	1156	\$9,395
KF7W-0612-C	5' 10" x 11' 7"	1301	\$9,241
KF7W-0806-C	7' 9" x 5' 10"	957	\$8,018
KF7W-0808-C	7' 9" x 7' 9"	1179	\$9,782
KF7W-0810-C	7' 9" x 9' 8"	1350	\$9,741
KF7W-0812-C	7' 9" x 11' 7"	1539	\$11,078
KF7W-0814-C	7' 9" x 13' 6"	1728	\$12,205
KF7W-1006-C	9' 8" x 5' 10"	1156	\$9,395
KF7W-1008-C	9' 8" x 7' 9"	1350	\$9,741
KF7W-1010-C	9' 8" x 9' 8"	1567	\$11,861
KF7W-1206-C	11' 7" x 5' 10"	1301	\$9,241
KF7W-1208-C	11' 7" x 7' 9"	1539	\$11,078
KF7W-1408-C	13' 6" x 7' 9"	1728	\$12,205

Freezers with Floor: -10°F - 7'-6-1/4" High

Model	Actual Size	Ship Weight	Panel List
KF7W-0608-F	5' 10" x 7' 9"	109	\$9,937
KF7W-0610-F	5' 10" x 9' 8"	1146	\$12,654
KF7W-0612-F	5' 10" x 11' 7"	1237	\$13,762
KF7W-0806-F	7' 9" x 5' 10"	109	\$8,887
KF7W-0808-F	7' 9" x 7' 9"	1169	\$12,840
KF7W-0810-F	7' 9" x 9' 8"	1249	\$14,005
KF7W-0812-F	7' 9" x 11' 7"	1438	\$15,472
KF7W-1006-F	9' 8" x 5' 10"	1146	\$12,654
KF7W-1008-F	9' 8" x 7' 9"	1314	\$14,132
KF7W-1010-F	9' 8" x 9' 8"	1466	\$14,838
KF7W-1206-F	11' 7" x 5' 10"	1237	\$13,762

Floorless Coolers: 38°F - 7'-6-1/4" High

Model	Actual Size	Ship Weight	Panel List
KFX7W-0608-C	5' 10" x 7' 9"	765	\$7,818
KFX7W-0610-C	5' 10" x 9' 8"	916	\$8,486
KFX7W-0612-C	5' 10" x 11' 7"	1013	\$8,637
KFX7W-0806-C	7' 9" x 5' 10"	765	\$7,818
KFX7W-0808-C	7' 9" x 7' 9"	923	\$8,816
KFX7W-0810-C	7' 9" x 9' 8"	1030	\$9,101
KFX7W-0812-C	7' 9" x 11' 7"	1123	\$10,233
KFX7W-0814-C	7' 9" x 13' 6"	1312	\$11,676
KFX7W-1006-C	9' 8" x 5' 10"	905	\$8,486
KFX7W-1008-C	9' 8" x 7' 9"	1041	\$9,101
KFX7W-1010-C	9' 8" x 9' 8"	1219	\$10,483
KFX7W-1206-C	11' 7" x 5' 10"	1013	\$8,637
KFX7W-1208-C	11' 7" x 7' 9"	1123	\$10,233
KFX7W-1408-C	13' 6" x 7' 9"	1312	\$11,676

Specifications and Accessories on pg 11

Coolers with Floors: 38°F - 8'-6-1/4" High

Model	Actual Size	Ship Weight	Panel List
KF8W-0608-C	5' 10" x 7' 9"	957	\$8,708
KF8W-0610-C	5' 10" x 9' 8"	1156	\$9,396
KF8W-0612-C	5' 10" x 11' 7"	1301	\$9,241
KF8W-0806-C	7' 9" x 5' 10"	957	\$8,708
KF8W-0808-C	7' 9" x 7' 9"	1179	\$9,782
KF8W-0810-C	7' 9" x 9' 8"	1350	\$10,108
KF8W-0812-C	7' 9" x 11' 7"	1539	\$11,469
KF8W-0814-C	7' 9" x 13' 6"	1728	\$12,414
KF8W-1006-C	9' 8" x 5' 10"	1156	\$9,396
KF8W-1008-C	9' 8" x 7' 9"	1350	\$10,108
KF8W-1010-C	9' 8" x 9' 8"	1567	\$12,642
KF8W-1012-C	8' 8" x 11' 7"	1817	\$13,815
KF8W-1014-C	9' 8" x 13' 6"	2102	\$15,997
KF8W-1206-C	11' 7" x 5' 10"	1301	\$9,241
KF8W-1208-C	11' 7" x 7' 9"	1539	\$14,619
KF8W-1210-C	11' 7" x 9' 8"	1817	\$13,815
KF8W-1212-C	11' 7" x 11' 7"	2102	\$16,013
KF8W-1214-C	11' 7" x 13' 6"	2413	\$17,637
KF8W-1408-C	13' 6" x 7' 9"	1728	\$12,414
KF8W-1410-C	13' 6" x 9' 8"	2102	\$15,997
KF8W-1412-C	13' 6" x 11' 7"	2413	\$17,637

Freezers with Floors: -10°F - 8'-6-1/4" High

Model	Actual Size	Ship Weight	Panel List
KF8W-0608-F	5' 10" x 7' 9"	109	\$9,516
KF8W-0610-F	5' 10" x 9' 8"	1146	\$12,654
KF8W-0612-F	5' 10" x 11' 7"	1237	\$13,762
KF8W-0806-F	7' 9" x 5' 10"	109	\$9,516
KF8W-0808-F	7' 9" x 7' 9"	1243	\$12,840
KF8W-0810-F	7' 9" x 9' 8"	1249	\$14,005
KF8W-0812-F	7' 9" x 11' 7"	1438	\$15,472
KF8W-1006-F	9' 8" x 5' 10"	1146	\$12,654
KF8W-1008-F	9' 8" x 7' 9"	1314	\$14,132
KF8W-1010-F	9' 8" x 9' 8"	1466	\$14,838
KF8W-1206-F	11' 7" x 5' 10"	1237	\$13,762
KF8W-1208-F	11' 7" x 7' 9"	1438	\$15,472

Floorless Coolers: 38°F - 8'-6-1/4" High

Model	Actual Size	Ship Weight	Panel List
KFX8W-0608-C	5' 10" x 7' 9"	765	\$8,391
KFX8W-0610-C	5' 10" x 9' 8"	916	\$9,200
KFX8W-0612-C	5' 10" x 11' 7"	1013	\$9,843
KFX8W-0806-C	7' 9" x 5' 10"	765	\$8,391
KFX8W-0808-C	7' 9" x 7' 9"	923	\$9,072
KFX8W-0810-C	7' 9" x 9' 8"	1030	\$10,014
KFX8W-0812-C	7' 9" x 11' 7"	1123	\$11,711
KFX8W-0814-C	7' 9" x 13' 6"	1312	\$12,325
KFX8W-1006-C	9' 8" x 5' 10"	916	\$9,200
KFX8W-1008-C	9' 8" x 7' 9"	1030	\$10,014
KFX8W-1010-C	9' 8" x 9' 8"	1219	\$12,633
KFX8W-1012-C	9' 8" x 11' 7"	1377	\$14,217
KFX8W-1014-C	9' 8" x 13' 6"	1554	\$16,076
KFX8W-1206-C	11' 7" x 5' 10"	1013	\$9,843
KFX8W-1208-C	11' 7" x 7' 9"	1123	\$11,711
KFX8W-1210-C	11' 7" x 9' 8"	1244	\$14,217
KFX8W-1212-C	11' 7" x 11' 7"	1402	\$16,480
KFX8W-1214-C	11' 7" x 13' 6"	1543	\$18,150
KFX8W-1408-C	13' 6" x 7' 9"	1312	\$12,325
KFX8W-1410-C	13' 6" x 9' 8"	1554	\$16,076
KFX8W-1412-C	13' 6" x 11' 7"	1703	\$18,150

Specifications:

Interior/Exterior Finish: 26 Ga Embossed Galvalume

Door: 34x78, standard hardware package with dial thermometer - includes interior & exterior diamond tread kick plates

Insulation: 4" 100% foam-in-place polyurethane

Floored Application: Era .100 Smooth Aluminum - actual height 7' 6.25"/8' 6.25"

Floorless Application: 4: Vinyl Screed - actual height 7' 6.25"/8' 6.25"

Outdoor units must be quoted by factory and is not available for 5 day shipping

Refrigeration: PC 120 Series Remote 208-230/60/1, Freezer Evap 208-230/60/1, Cooler Evap 115/60/1

Options & Accessories:

Seismic Kit (available for floored applications only) - \$450 net

Oregon Seal - \$50 net per door

Chicago Relief Valve - \$30 net per unit

Headmaster - \$55 net per unit

Extended Compressor Warranty

Exterior Ramp 36" deep - \$320 net per unit

Kason Strip Curtain - \$75 net per unit

Kason 1809 Interior Light - \$248 net per unit

Trim 3x3x96L - \$20 net per unit

Outdoor Package Requirements:

Outdoor units must be quoted by factory and are not available for the 5 day Rapid Ship Program.

Refrigeration Accessories

Optional 5 Year - Compressor Warranty	
H.P	Net
1/2	\$102
3/4	\$113
1	\$121
1-1/2	\$144
2	\$176
2-1/2	\$204
3	\$233

Warranty

Kolpak* ("Company") warrants to the original purchaser this refrigeration system to be free from defects in material and workmanship under normal use and service in accordance with the terms of this Warranty. This Warranty is issued to the original purchaser/user at the original installation location and is in lieu of all other warranties expressed or implied. Completion of the Welbilt Foodservice Walk-In & Refrigeration Claim Form is required for consideration of claims to be processed under parts and/or labor warranty. All warranty service shall be performed by an authorized service provider. The claim form must be received within (60) sixty days of the date of service. Reimbursement for local parts purchase must include a copy of the wholesale invoice. Company does not pay both travel time and mileage. Company reserves the right to pay no more than the average commercial hourly rates and part prices within the particular state or region of the country where the service is performed.

Parts

Foamed in-place panels are warranted to the original purchaser to be free from defects in material and workmanship, under normal use and service, for a period of (10) ten years from the first to occur of the original start-up date by a factory authorized servicer, or six (6) months from factory ship date. Painted surfaces will be warranted for (1) one year from the original start-up date. Component parts, doors, and assemblies (except bulbs) found to be defective in material or workmanship are warranted for a period of (1) one year from original start-up date by a factory authorized servicer. First year

compressor failures shall be exchanged over the counter by the compressor manufacturer's wholesaler. If the optional four year compressor warranty is purchased and the original compressor fails after expiration of the one year parts warranty, Company will provide a direct replacement or authorize local purchase of a replacement compressor. If local purchase is authorized, the original wholesale invoice along with the serial tag from the original defective compressor shall be sent to Company for reimbursement. Labor, freight, travel, and additional parts/supplies are not covered under the extended compressor warranty. Replacement parts purchased from Company will be warranted for a period of (90) ninety days from factory ship date.

Labor

Panels, hardware, and electrical components (except bulbs) are covered by a (1) one year labor warranty for the replacement of component parts that are defective in material or workmanship.

Refrigeration systems that are not factory refrigerant charged (PR, Multi-Pak, Rack, Large Room systems, etc.) are covered by a (30) thirty day labor warranty for the replacement of component parts that are defective in material or workmanship. Refrigeration systems that are factory refrigerant charged (PC, PCL, Polar Pak, etc.) are covered by a (1) one year labor warranty for the replacement of component parts that are defective in material or workmanship.

- Normal maintenance, adjustments, and cleaning.
- Repairs due to unauthorized modifications.
- Damage from improper installation.
- Damage or delays occurring in transit.
- Damage from misuse, abuse, neglect, or accidents.
- Damage or loss of product, property, income, or profit.
- Legacy floor panels are not warranted under the following conditions:
 - Wet mopping or use of a water hose for cleaning.
 - Wheel traffic (carts, dollies, etc.) on foot traffic floors (substrate backed) floors.
 - Weight loads exceeding 700 psf on foot traffic floors.
 - Weight loads exceeding 1000 psf on rolling cart floors.
- New Era floors (After October 1, 2017) are not warranted under the following conditions:
 - Wet mopping or use of a water hose for cleaning.
 - Weight loads exceeding 1000 psf on standard floors.
 - Weight loads exceeding 5000 psf on structural floors.

The warranty period will begin at the first to occur of original start-up date, validated by a legal document (certificate of occupancy, bill of sale, etc.), or (90) ninety days from factory ship date.

Exclusions from Warranty Coverage:

Limitations of Liability The preceding paragraphs set forth the exclusive remedy for all claims based on failure of, or defect in, Walk-in refrigeration systems sold hereunder, whether the failure or defect arises before or during the warranty period, and whether a claim, however instituted, is based on contract, indemnity, warranty, tort (including negligence), strict liability, implied by statute, common-law or otherwise, Company and agents shall not be liable for any claims for personal injuries or consequential damages or loss, howsoever caused, including but not limited to loss of profits, additional labor costs, loss of refrigerant or food products, or for any delay in the performance of this Warranty due to causes beyond its control. Upon the expiration of the warranty period, all such liability shall terminate. THE FOREGOING WARRANTIES ARE EXCLUSIVE AND IN LIEU OF ALL OTHER WARRANTIES, WHETHER WRITTEN, ORAL, IMPLIED OR STATUTORY. NO IMPLIED WARRANTY OF MERCHANTABILITY OR FITNESS FOR PARTICULAR PURPOSE SHALL APPLY, AND COMPANY DOES NOT WARRANT ANY PRODUCTS OR SERVICES OF OTHERS.

Remedies

The liability of Company for breach of any warranty obligation hereunder is limited to: (i) the repair or replacement of the Walk-in on which the liability is based, or with respect to services, re-performance of the services; or (ii) at Company's option, the refund of the amount paid for said equipment or services. Any breach by Company with respect to any item or unit of equipment or services shall be deemed a breach with respect to that item or unit or service only.

Kolpak - 2915 Tennessee Avenue North, Parsons, TN 38363, Phone: 800-225-9916

*Kolpak is an operating division of Welbilt, Inc.



Welbilt offers fully-integrated kitchen systems and our products are backed by KitchenCare[®] aftermarket parts and service. Welbilt's portfolio of award-winning brands includes **Cleveland**[™], **Convotherm**[®], **Crem**[®], **Delfield**[®], **fitkitchen**SM, **Frymaster**[®], **Garland**[®], **Kolpak**[®], **Lincoln**[™], **Manitowoc**[®], **Merco**[®], **Merrychef**[®] and **Multiplex**[®].

Bringing innovation to the table • welbilt.com